



ETS1 (Ab-38) Antibody

E11-0478B

Catalog Number:E11-0478B

Concentration: 1mg/ml

Swiss-Prot No.: P27577

Other Names: C-ets-1 protein, ETS-1, ETS1, p54

Storage/Stability: Store at -20°C/1 year

Form of Antibody: Rabbit IgG in phosphate buffered saline (without Mg²⁺ and Ca²⁺), pH 7.4, 150mM NaCl, 0.02% sodium azide and 50% glycerol.

Immunogen: The antiserum was produced against synthesized non-phosphopeptide derived from human ETS1 around the phosphorylation site of threonine 38 (L-L-T^P-P-S).

Purification: The antibody was affinity-purified from

rabbit antiserum by affinity-chromatography using epitope-specific immunogen.

Specificity: ETS1 (Ab-38) antibody detects endogenous levels of total ETS1 protein.

Reactivity: Human, Mouse

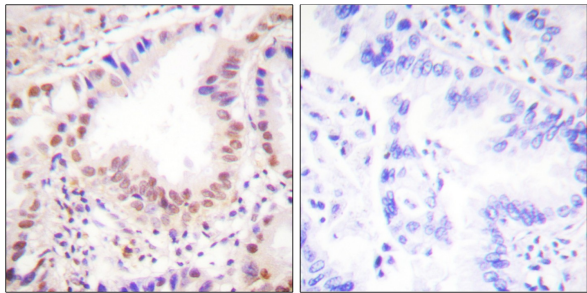
Applications: WB: 1:500~1:1000 IHC: 1:50~1:100
IF: 1:100~1:500 ELISA: 1:1000

References:

Tsukasa Higuchi, Mol. Cell. Biol., May 2007; 27: 3353 - 3366.

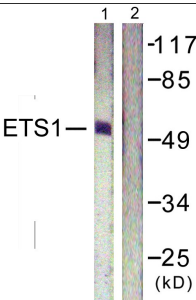
H Suzuki, PNAS, May 1995; 92: 4442.

V Fafeur, Cell Growth Differ., Jun 1997; 8: 655.



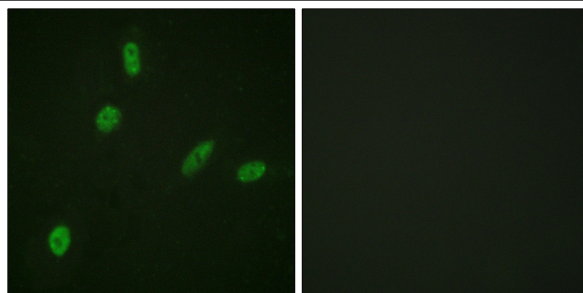
Peptide - +

Immunohistochemistry analysis of paraffin-embedded human lung carcinoma tissue using ETS1 (Ab-38) antibody.



Serum + +
Peptide - +

Western blot analysis of extracts from HeLa cells, treated with Serum (20%, 15mins), using ETS1 (Ab-38) antibody.



Peptide - +

Immunofluorescence analysis of HeLa cells, using ETS1 (Ab-38) antibody.