



FOXO1A (Phospho-Ser329) Antibody

E11-0484A

Catalog Number: E11-0484A

Concentration: 1mg/ml

Swiss-Prot No.: Q12778

Other Names: FKHR, FOXO1, Forkhead box protein O1A, Forkhead in rhabdomyosarcoma

All Sites: Human: Ser329; Mouse: Ser326; Rat: Ser323

Storage/Stability: Store at -20°C/1 year

Form of Antibody: Rabbit IgG in phosphate buffered saline (without Mg^{2+} and Ca^{2+}), pH 7.4, 150mM NaCl, 0.02% sodium azide and 50% glycerol.

Immunogen: The antiserum was produced against synthesized phosphopeptide derived from human FOXO1A around the phosphorylation site of serine 329 (R-L-S^P-P-I).

Purification: The antibody was affinity-purified from rabbit antiserum by affinity-chromatography using epitope-specific phosphopeptide. The antibody against non-phosphopeptide was removed by chromatography using non-phosphopeptide corresponding to the phosphorylation site.

Specificity: FOXO1A (Phospho-Ser329) antibody detects endogenous levels of FOXO1A only when phosphorylated at serine 329.

Reactivity: Human, Mouse, Rat

Applications: WB: 1:500~1:1000 IHC: 1:50~1:100 ELISA: 1:1000

References:

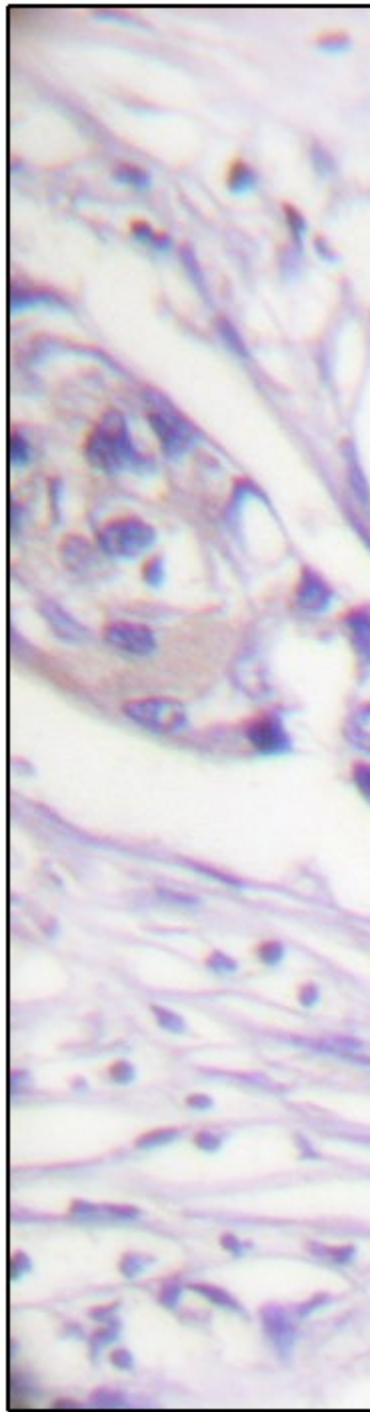
Philippe R.J. Bois, J. Cell Biol., Sep 2005; 170: 903 - 912.

Kamel Izeradjene, AACR Meeting Abstracts, Apr 2005; 2005: 677.

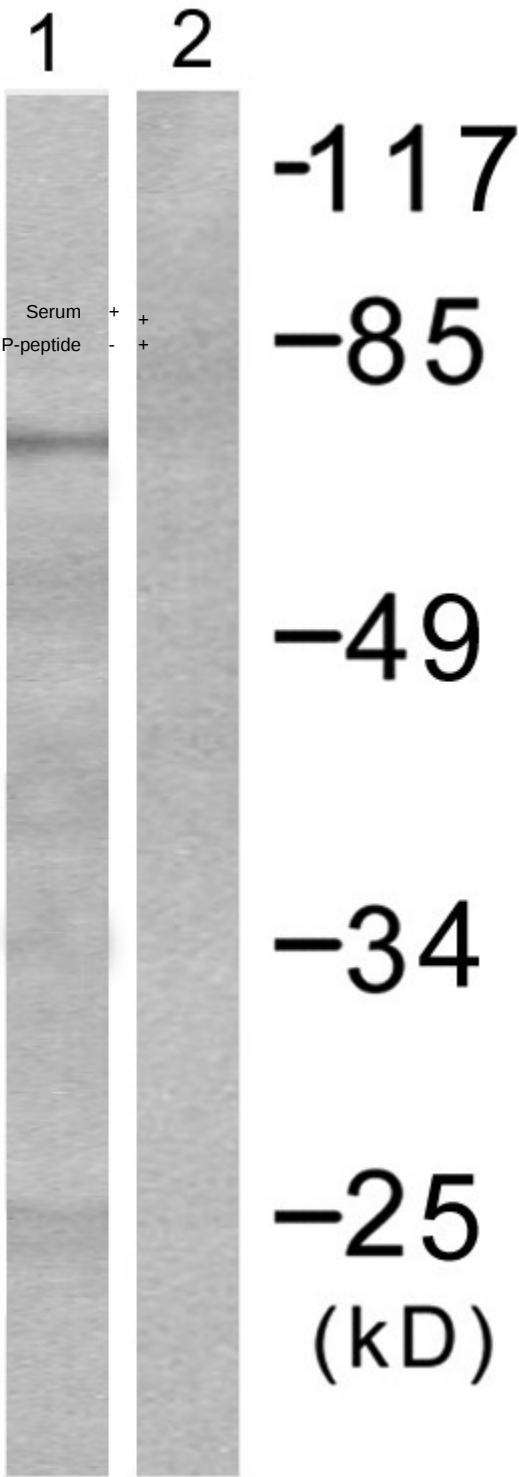
Xue-Yuan Dong, Cancer Res., Jul 2006; 66: 6998 - 7006.

L Grinius, J. Endocrinol., Apr 2006; 189: 179 - 187.

J.J. Kim, Biol Reprod, Oct 2005; 73: 833 - 839.



FOXO1A (pSer329)



P-peptide	-	+
Immunohistochemistry analysis of paraffin-embedded human breast carcinoma tissue using FOXO1A (Phospho-Ser329) antibody.		Western blot analysis of extracts from HeLa cells, treated with Serum (20%, 15mins), using FOXO1A

	(Phospho-Ser329) antibody.
--	----------------------------

For Research Use Only