

EnoGene GRK2 Antibody

E11-0486B

Catalog Number: E11-0486B

Concentration: 1mg/ml

Swiss-Prot No.: P25098

Other Names: ADRBK1, ARBK1, BARK, BARK1, Beta-ARK-1, Beta-adrenergic receptor kinase 1, EC 2.7.11.15, G protein receptor kinase 2, G- protein coupled receptor kinase 2, kinase GRK2

Storage/Stability: Store at -20°C/1 year

Form of Antibody: Rabbit IgG in phosphate buffered saline (without Mg^{2+} and Ca^{2+}), pH 7.4, 150mM NaCl, 0.02% sodium azide and 50% glycerol.

Immunogen: The antiserum was produced against synthesized peptide derived from Internal of human GRK2.

Purification: The antibody was affinity-purified from

rabbit antiserum by affinity-chromatography using epitope-specific immunogen.

Specificity: GRK2 antibody detects endogenous levels of total GRK2 protein.

Reactivity: Human (Identities = 100%, Positives = 100%); Mouse (Identities = 100%, Positives = 100%);
Rat (Identities = 100%, Positives = 100%)

Applications: IHC: 1:50~1:100 ELISA: 1:1000

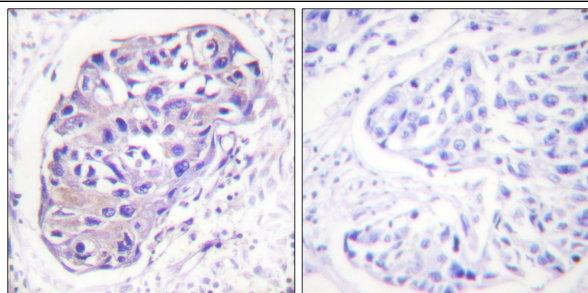
References:

Aarti N. Desai, J. Pharmacol. Exp. Ther., Jun 2006; 317: 1027 - 1035.

John A. Gray, Mol. Pharmacol., Nov 2001; 60: 1020.

Anne Vroon, J. Leukoc. Biol., May 2004; 75: 901 - 909.

R. J. Hughes, Am J Physiol Cell Physiol, Mar 1996; 270: C885 - C891.



Peptide - +

Immunohistochemistry analysis of paraffin-embedded human breast carcinoma tissue using GRK2 antibody.

For Research Use Only