



## Lck (Phospho-Tyr505) Antibody

E11-0505A

**Catalog Number:** E11-0505A

**Concentration:** 1mg/ml

**Swiss-Prot No.:** P06239

**Other Names:** EC 2.7.10.2, LCK, LSK, LSK-T, P56-LCK, T cell-specific protein-tyrosine kinase, kinase Lck

**All Sites:** Human: Tyr505; Mouse: Tyr505

**Storage/Stability:** Store at -20°C/1 year

**Form of Antibody:** Rabbit IgG in phosphate buffered saline (without  $Mg^{2+}$  and  $Ca^{2+}$ ), pH 7.4, 150mM NaCl, 0.02% sodium azide and 50% glycerol.

**Immunogen:** The antiserum was produced against synthesized phosphopeptide derived from human LCK around the phosphorylation site of tyrosine 505 (G-Q-Y<sup>P</sup>-Q-P).

**Purification:** The antibody was affinity-purified from rabbit antiserum by affinity-chromatography using epitope-specific phosphopeptide. The antibody against non-phosphopeptide was removed by chromatography using non-phosphopeptide corresponding to the phosphorylation site.

**Specificity:** Lck (Phospho-Tyr505) antibody detects endogenous levels of LCK only when phosphorylated at tyrosine 505.

**Reactivity:** Human, Mouse

**Applications:** WB: 1:500~1:1000 IHC: 1:50~1:100 ELISA: 1:60000

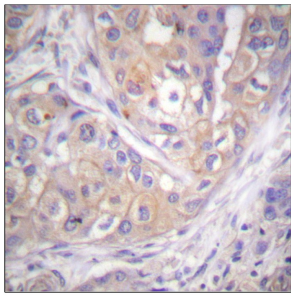
**References:**

K M Tchou-Wong, Mol. Cell. Biol., Jan 1992; 12: 394 - 401.

Marit Inngjerdigen, Blood, May 2002; 99: 4318 - 4325.

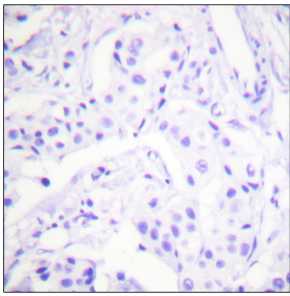
K Lin, Int. Immunol., Feb 1997; 9: 291 - 306.

Kavita Tewari, PNAS, Oct 2006; 103: 16388 - 16393.



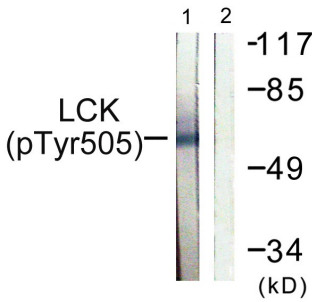
P-peptide

-



+

Immunohistochemistry analysis of paraffin-embedded human breast carcinoma tissue using Lck (Phospho-Tyr505) antibody.



P-peptide

-

+

Western blot analysis of extracts from Jurkat cells, using Lck (Phospho-Tyr505) antibody.