

EnoGene MRLC2 Antibody

E11-0513B

Catalog Number: E11-0513B

Concentration: 1mg/ml

Swiss-Prot No.: P19105

Other Names: MLCB, MLRA, MLRM, MRCL3, Myosin RLC, Myosin RLC-A, Myosin regulatory light chain, Myosin regulatory light chain 2, nonsarcomeric, Myosin

Storage/Stability: Store at -20°C/1 year

Form of Antibody: Rabbit IgG in phosphate buffered saline (without Mg^{2+} and Ca^{2+}), pH 7.4, 150mM NaCl, 0.02% sodium azide and 50% glycerol.

Immunogen: The antiserum was produced against synthesized peptide derived from Internal of human MRLC2.

Purification: The antibody was affinity-purified from

rabbit antiserum by affinity-chromatography using epitope-specific immunogen.

Specificity: MRLC2 antibody detects endogenous levels of total MRLC2 protein.

Reactivity: Human (Identities = 100%, Positives = 100%);
Mouse (Identities = 100%, Positives = 100%);
Rat (Identities = 92%, Positives = 92%)

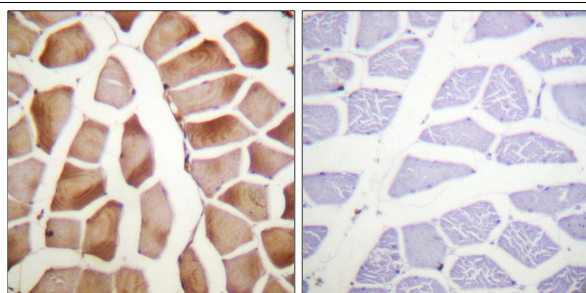
Applications: IHC: 1:50~1:100 IF: 1:100~1:500
ELISA: 1:5000

References:

A Faerman, Development, Jul 1993; 118: 919.

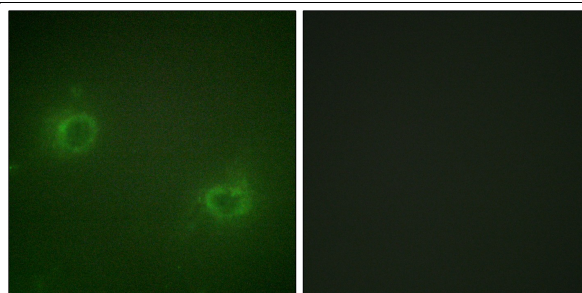
S Navankasattusas, Mol. Cell. Biol., Nov 1994; 14: 7331 - 7339.

KJ Lee, J. Biol. Chem., Aug 1992; 267: 15875 - 15885.



Peptide - +

Immunohistochemistry analysis of paraffin-embedded human skeletal muscle tissue using MRLC2 antibody.



Peptide - +

Immunofluorescence analysis of COS-7 cells, using MRLC2 antibody.

For Research Use Only