



Parkin (Phospho-Ser131) Antibody

E11-0542A

Catalog Number: E11-0542A

Concentration: 1mg/ml

Swiss-Prot No.: O60260

Other Names: EC 6.3.2.-, PARK2, PRKN, PRKN2, Parkinson disease protein 2, Parkinson juvenile disease protein 2, ubiquitin E3 ligase PRKN

All Sites: Human: Ser131; Mouse: Ser131

Storage/Stability: Store at -20°C/1 year

Form of Antibody: Rabbit IgG in phosphate buffered saline (without Mg^{2+} and Ca^{2+}), pH 7.4, 150mM NaCl, 0.02% sodium azide and 50% glycerol.

Immunogen: The antiserum was produced against synthesized phosphopeptide derived from human Parkin around the phosphorylation site of serine 131 (K-D-S^P-P-P).

Purification: The antibody was affinity-purified from rabbit antiserum by affinity-chromatography using epitope-specific phosphopeptide. The antibody against non-phosphopeptide was removed by chromatography using non-phosphopeptide corresponding to the phosphorylation site.

Specificity: Parkin (Phospho-Ser131) antibody detects endogenous levels of Parkin only when phosphorylated at serine 131.

Reactivity: Human, Mouse

Applications: IHC: 1:50~1:100 ELISA: 1:10000

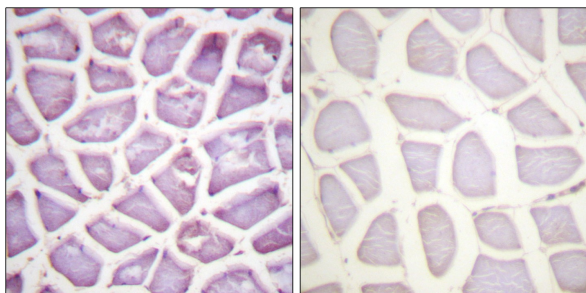
References:

J. Menéndez, Hum. Mol. Genet., Jul 2006; 15: 2045 - 2058.

Miratul M.K. Muqit, Hum. Mol. Genet., Jan 2004; 13: 117 - 135.

Kenny K. K. Chung, Sci. Aging Knowl. Environ., Apr 2004; 2004: or11.

Se Jung Kim, J. Biol. Chem., Oct 2003; 278: 41890 - 41899.



P-peptide - +

Immunohistochemistry analysis of paraffin-embedded human skeletal muscle tissue using Parkin (Phospho-Ser131) antibody.