



Raf1 (Phospho-Ser621) Antibody

E11-0566A

Catalog Number: E11-0566A

Concentration: 1mg/ml

Swiss-Prot No.: P04049

Other Names: C-RAF, C-Raf, CRAF, EC 2.7.11.1, Protein kinase raf 1, RAF proto-oncogene serine/threonine-protein kinase, RAF-1, RAF1, Raf proto-oncogene serine/threonine-protein kinase, Raf-1, Similar to murine leukemia viral (V-raf-1) oncogene homolog 1, kinase Raf1

All Sites: Human: Ser621; Mouse: Ser621; Rat: Ser621

Storage/Stability: Store at -20°C/1 year

Form of Antibody: Rabbit IgG in phosphate buffered saline (without Mg^{2+} and Ca^{2+}), pH 7.4, 150mM NaCl, 0.02% sodium azide and 50% glycerol.

Immunogen: The antiserum was produced against synthesized phosphopeptide derived from human RAF1 around the phosphorylation site of serine 621 (S-A-S^P-E-P).

Purification: The antibody was affinity-purified from rabbit antiserum by affinity-chromatography using epitope-specific phosphopeptide. The antibody against non-phosphopeptide was removed by chromatography using non-phosphopeptide corresponding to the phosphorylation site.

Specificity: Raf1 (Phospho-Ser621) antibody detects endogenous levels of RAF1 only when phosphorylated at serine 621.

Reactivity: Human, Mouse, Rat

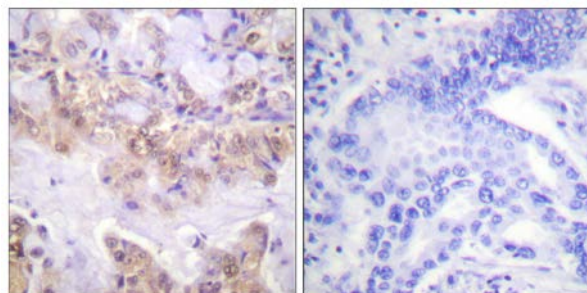
Applications: WB: 1:500~1:1000 IHC: 1:50~1:100 IF: 1:100~1:500 ELISA: 1:5000

References:

David R. Hodge, J. Biol. Chem., Jun 1998; 273: 15727.

Michael A. Beazely, Mol. Pharmacol., Jan 2005; 67: 250 - 259.

Deanna G. Adams, J. Biol. Chem., Dec 2005; 280: 42644 - 42654.

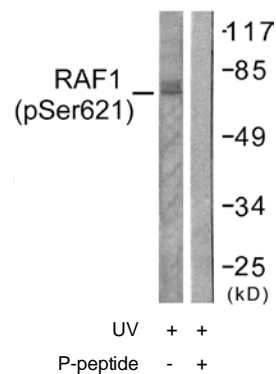


P-peptide

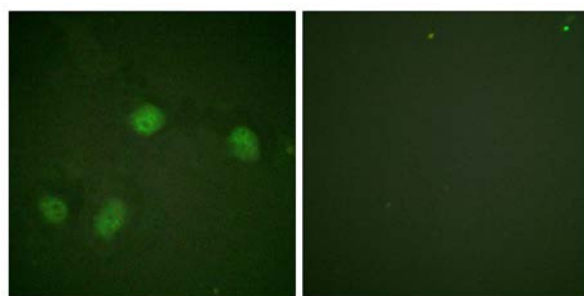
-

+

Immunohistochemistry analysis of paraffin-embedded human lung carcinoma tissue using Raf1 (Phospho-Ser621) antibody.



Western blot analysis of extracts from HeLa cells, treated with UV (5mins), using Raf1 (Phospho-Ser621) antibody.



P-peptide

-

+

Immunofluorescence analysis of HeLa cells, using Raf1 (Phospho-Ser621) antibody.