



Tuberin/TSC2 Antibody

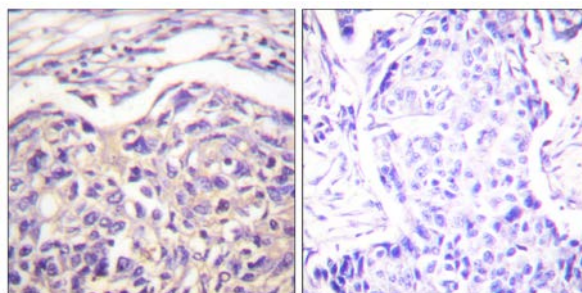
E11-0591B**Catalog Number:** E11-0591B**Concentration:** 1mg/ml**Swiss-Prot No.:** P49815**Other Names:** TSC2, Tuberous sclerosis 2 homolog protein, Tuberous sclerosis 2 protein**Storage/Stability:** Store at -20°C/1 year**Form of Antibody:** Rabbit IgG in phosphate buffered saline (without Mg^{2+} and Ca^{2+}), pH 7.4, 150mM NaCl, 0.02% sodium azide and 50% glycerol.**Immunogen:** The antiserum was produced against synthesized peptide derived from Internal of human Tuberin/TSC2.**Purification:** The antibody was affinity-purified from rabbit antiserum by affinity-chromatography using epitope-specific immunogen.**Specificity:** Tuberin/TSC2 antibody detects endogenous levels of total Tuberin/TSC2 protein.**Reactivity:** Human (Identities = 100%, Positives = 100%);
Mouse (Identities = 100%, Positives = 100%);
Rat (Identities = 100%, Positives = 100%)**Applications:** IHC: 1:50~1:100 ELISA: 1:1000**References:**

Ralf Wienecke, J. Biol. Chem., Jul 1995; 270: 16409.

Lauri D. Aicher, J. Biol. Chem., Jun 2001; 276: 21017 - 21021.

Geraldine A. Finlay, J. Biol. Chem., May 2004; 279: 23114 - 23122.

Vanishree Murthy, Am J Physiol Renal Physiol, May 2000; 278: 737.



Peptide

-

+

Immunohistochemistry analysis of paraffin-embedded human breast carcinoma tissue using Tuberin/TSC2 antibody.

For Research Use Only