



WASP (Phospho-Tyr290) Antibody

E11-0597A

Catalog Number: E11-0597A

Concentration: 1mg/ml

Swiss-Prot No.: P42768

Other Names: IMD2, WAS, Wiskott-Aldrich syndrome protein, Wiskott-Aldrich syndrome protein homolog

All Sites: Human: Tyr290; Mouse: Tyr293

Storage/Stability: Store at -20°C/1 year

Form of Antibody: Rabbit IgG in phosphate buffered saline (without Mg^{2+} and Ca^{2+}), pH 7.4, 150mM NaCl, 0.02% sodium azide and 50% glycerol.

Immunogen: The antiserum was produced against synthesized phosphopeptide derived from human WASP around the phosphorylation site of tyrosine 290 (L-I-Y^P-D-F).

Purification: The antibody was affinity-purified from rabbit antiserum by affinity-chromatography using epitope-specific phosphopeptide. The antibody against non-phosphopeptide was removed by chromatography using non-phosphopeptide corresponding to the phosphorylation site.

Specificity: WASP (Phospho-Tyr290) antibody detects endogenous levels of WASP only when phosphorylated at tyrosine 290.

Reactivity: Human, Mouse

Applications: WB: 1:500~1:1000 IHC: 1:50~1:100 ELISA: 1:1000

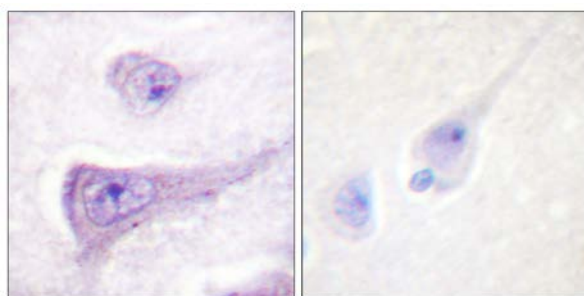
References:

Hervé Falet, Blood, Aug 2002; 100: 2113 - 2122.

E Remold-O'Donnell, J. Immunol., May 1997; 158: 4021.

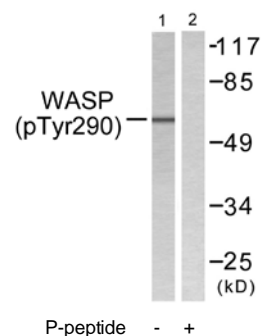
Ornella Parolini, Blood, Jul 1997; 90: 70 - 75.

Anna Shcherbina, J. Immunol., Dec 1999; 163: 6314.



P-peptide - +

Immunohistochemistry analysis of paraffin-embedded human brain tissue using WASP (Phospho-Tyr290) antibody.



P-peptide - +

Western blot analysis of extracts from HepG2 cells, using WASP (Phospho-Tyr290) antibody.