



ALK Antibody

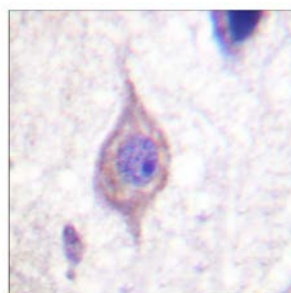
E11-0612B**Catalog Number:** E11-0612B**Concentration:** 1mg/ml**Swiss-Prot No.:** Q9UM73**Other Names:** ALK tyrosine kinase receptor precursor, Anaplastic lymphoma kinase, CD246, EC 2.7.10.1, kinase ALK**Storage/Stability:** Store at -20 °C/1 year**Form of Antibody:** Rabbit IgG in phosphate buffered saline (without Mg^{2+} and Ca^{2+}), pH 7.4, 150mM NaCl, 0.02% sodium azide and 50% glycerol.**Immunogen:** The antiserum was produced against synthesized peptide derived from Internal of human ALK.**Purification:** The antibody was affinity-purified from rabbit antiserum by affinity-chromatography using epitope-specific immunogen.**Specificity:** ALK antibody detects endogenous levels of total ALK protein.**Reactivity:** Human (Identities = 100%, Positives = 100%)**Applications:** IHC: 1:50~1:100 IF: 1:100~1:500 ELISA: 1:1000**References:**

Brunangelo Falini, Blood, Nov 1999; 94: 3509 - 3515.

Philipp B Staber, Blood, Aug 2007; 10.1182/blood-2007-02-071258.

Monika Kasprzycka, PNAS, Jun 2006; 103: 9964 - 9969.

Ritsuro Suzuki, Blood, Nov 2000; 96: 2993 - 3000.

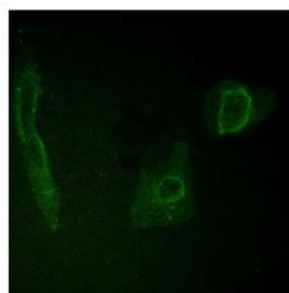


Peptide

-

+

Immunohistochemistry analysis of paraffin-embedded human brain tissue using ALK antibody.



Peptide

-

+

Immunofluorescence analysis of HeLa cells, using ALK antibody.

For Research Use Only