



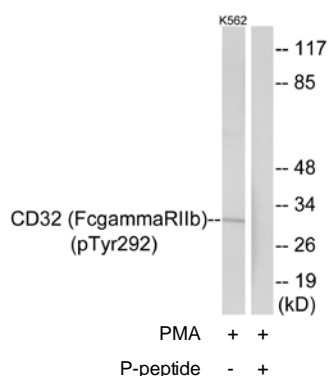
CD32 (Phospho-Tyr292) Antibody

E11-0626A**Catalog Number:** E11-0626A**Concentration:** 1mg/ml**Swiss-Prot No.:** P31994**Other Names:** CD32, CDW32, FC gamma receptor IIB, FC-gamma RII, FC-gamma RII-B, FC-gamma-RIIB, FCG2, FCG2B, FCGR2, FCGR2B, FCRII, FCgammaRIIB, IGFR2, IGG FC receptor II beta, IGG FC receptor II-B, LY-17, Low affinity immunoglobulin gamma FC region receptor II precursor, Low affinity immunoglobulin gamma FC region receptor II-B precursor**All Sites:** Human: Tyr292**Storage/Stability:** Store at -20 °C/1 year**Form of Antibody:** Rabbit IgG in phosphate buffered saline (without Mg^{2+} and Ca^{2+}), pH 7.4, 150mM NaCl, 0.02% sodium azide and 50% glycerol.**Immunogen:** The antiserum was produced against synthesized phosphopeptide derived from human CD32around the phosphorylation site of tyrosine 292 (I-T-Y^P-S-L).**Purification:** The antibody was affinity-purified from rabbit antiserum by affinity-chromatography using epitope-specific phosphopeptide. The antibody against non-phosphopeptide was removed by chromatography using non-phosphopeptide corresponding to the phosphorylation site.**Specificity:** CD32 (Phospho-Tyr292) antibody detects endogenous levels of CD32 only when phosphorylated at tyrosine 292.**Reactivity:** Human**Applications:** WB: 1:500~1:1000 ELISA: 1:1000**References:**

Stuart S.G., EMBO J. 8:3657-3666(1989).

Brooks D.G., J. Exp. Med. 170:1369-1385(1989).

Engelhardt W., Eur. J. Immunol. 20:1367-1377(1990).



Western blot analysis of extracts from K562 cells, treated with PMA (125ng/ml, 30mins), using CD32 (Phospho-Tyr292) antibody.

For Research Use Only