



## Chk1 (Phospho-Ser296) Antibody

E11-0629A

**Catalog Number:** E11-0629A

**Concentration:** 1mg/ml

**Swiss-Prot No.:** O14757

**Other Names:** CHEK1; Chk1; EC 2.7.11.1; kinase Chk1

**All Sites:** Human: Ser296

**Storage/Stability:** Store at -20 °C/1 year

**Form of Antibody:** Rabbit IgG in phosphate buffered saline (without  $Mg^{2+}$  and  $Ca^{2+}$ ), pH 7.4, 150mM NaCl, 0.02% sodium azide and 50% glycerol.

**Immunogen:** The antiserum was produced against synthesized phosphopeptide derived from human Chk1 around the phosphorylation site of serine 296 (I-Q-S<sup>P</sup>-N-L).

**Purification:** The antibody was affinity-purified from rabbit antiserum by affinity-chromatography using

epitope-specific phosphopeptide. The antibody against non-phosphopeptide was removed by chromatography using non-phosphopeptide corresponding to the phosphorylation site.

**Specificity:** Chk1 (Phospho-Ser296) antibody detects endogenous levels of Chk1 only when phosphorylated at serine 296.

**Reactivity:** Human (Identities = 100%, Positives = 100%)

**Applications:** WB: 1:500~1:1000 IHC: 1:50~1:100

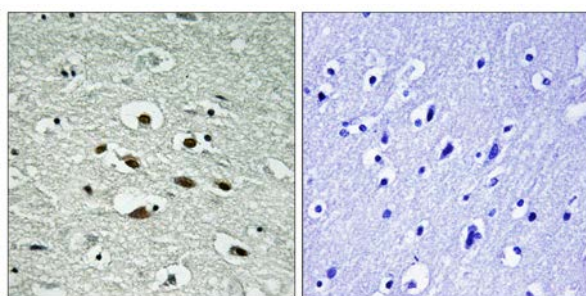
ELISA: 1:5000

### References:

Sanchez Y., Science 277:1497-1501(1997).

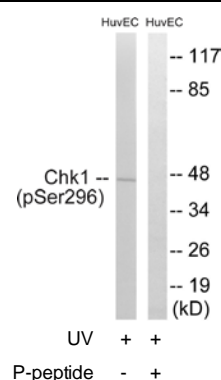
Flaggs G., Curr. Biol. 7:977-986(1997).

Semba S., Int. J. Oncol. 16:731-737(2000).



P-peptide - +

Immunohistochemistry analysis of paraffin-embedded human brain tissue using Chk1 (Phospho-Ser296) antibody.



Western blot analysis of extracts from HUVEC cells, treated with UV (15mins), using Chk1 (Phospho-Ser296) antibody.

**For Research Use Only**