



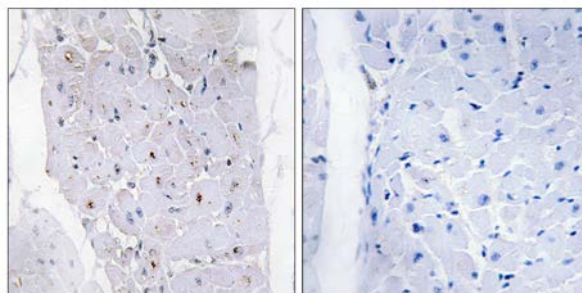
## Chk1 Antibody

**E11-0629B****Catalog Number:** E11-0629B**Concentration:** 1mg/ml**Swiss-Prot No.:** O14757**Other Names:** CHEK1, Chk1, EC 2.7.11.1, kinase Chk1**Storage/Stability:** Store at -20°C/1 year**Form of Antibody:** Rabbit IgG in phosphate buffered saline (without  $Mg^{2+}$  and  $Ca^{2+}$ ), pH 7.4, 150mM NaCl, 0.02% sodium azide and 50% glycerol.**Immunogen:** The antiserum was produced against synthesized peptide derived from Internal of human Chk1.**Purification:** The antibody was affinity-purified from rabbit antiserum by affinity-chromatography using epitope-specific immunogen.**Specificity:** Chk1 antibody detects endogenous levels of total Chk1 protein.**Reactivity:** Human (Identities = 100%, Positives = 100%)**Applications:** IHC: 1:50~1:100    ELISA: 1:1000**References:**

Sanchez Y., Science 277:1497-1501(1997).

Flaggs G., Curr. Biol. 7:977-986(1997).

Semba S., Int. J. Oncol. 16:731-737(2000).



Peptide

-

+

Immunohistochemistry analysis of paraffin-embedded human heart tissue using Chk1 antibody.

**For Research Use Only**