



CX3CR1 Antibody

E11-062G

Catalog Number: E11-062G

Concentration: 1mg/ml, 100ug/100uL

Swiss-Prot No.: P49238

Other Names: CX3C chemokine receptor 1; C-X3-C
CKR-1; CX3CR1; Fractalkine receptor; G-protein coupled
receptor 13; V28; Beta chemokine receptor-like 1;
CMK-BRL-1; CMKBRL1; CX3CR1; CMKBRL1; GPR13

Storage/Stability: Store at -20 °C/1 year

Form of Antibody: Rabbit IgG in phosphate buffered
saline (without Mg²⁺ and Ca²⁺), pH 7.4, 150mM NaCl,
0.02% sodium azide and 50% glycerol.

Immunogen: The antiserum was produced against
synthesized peptide derived from internal of human

CX3CR1.

Purification: The antibody was affinity-purified from
rabbit antiserum by affinity-chromatography using
epitope-specific immunogen.

Specificity: CX3CR1 antibody detects endogenous levels
of total CX3CR1 protein.

Reactivity: Human (Identities = 100%, Positives = 100%)

Applications: IHC: 1:50~1:100 IF: 1:100~1:500

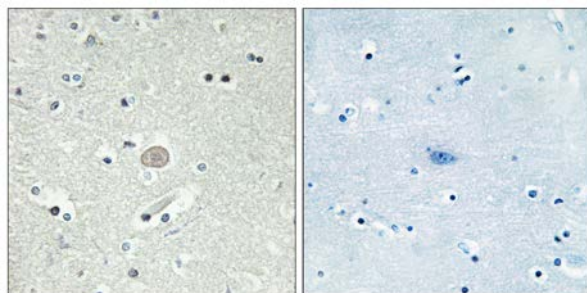
ELISA: 1:5000

References:

Raport C.J., Gene 163:295-299(1995).

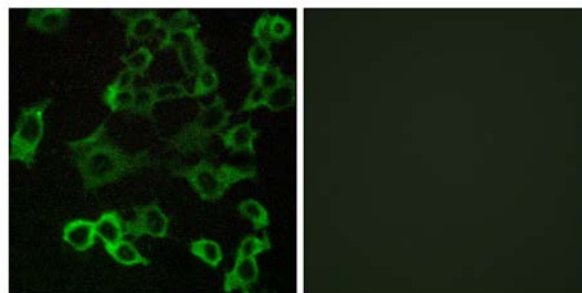
Combadiere C., DNA Cell Biol. 14:673-680(1995).

DeVries M.E., J. Biol. Chem. 278:11985-11994(2003).



Peptide - +

Immunohistochemistry analysis of paraffin-embedded
human brain tissue, using CX3CR1 antibody.



Peptide - +

Immunofluorescence analysis of COS-7 cells, using
CX3CR1 antibody.

For Research Use Only