



## Cyclin B1 (Phospho-Ser147) Antibody

E11-0635A

**Catalog Number:** E11-0635A

**Concentration:** 1mg/ml

**Swiss-Prot No.:** P14635

**Other Names:** CCN-2, CCNB, CCNB1, CCNB1-RS1, CYCB, CYCB1, G2/mitotic-specific cyclin B1

**All Sites:** Human: Ser147; Mouse: Ser144

**Storage/Stability:** Store at -20 °C/1 year

**Form of Antibody:** Rabbit IgG in phosphate buffered saline (without  $Mg^{2+}$  and  $Ca^{2+}$ ), pH 7.4, 150mM NaCl, 0.02% sodium azide and 50% glycerol.

**Immunogen:** The antiserum was produced against synthesized phosphopeptide derived from human Cyclin B1 around the phosphorylation site of serine 147 (A-F-S<sup>P</sup>-D-V).

**Purification:** The antibody was affinity-purified from rabbit antiserum by affinity-chromatography using epitope-specific phosphopeptide. The antibody against

non-phosphopeptide was removed by chromatography using non-phosphopeptide corresponding to the phosphorylation site.

**Specificity:** Cyclin B1 (Phospho-Ser147) antibody detects endogenous levels of Cyclin B1 only when phosphorylated at serine 147.

**Reactivity:** Human, Mouse

**Applications:** WB: 1:500~1:1000 IHC: 1:50~1:100

ELISA: 1:10000

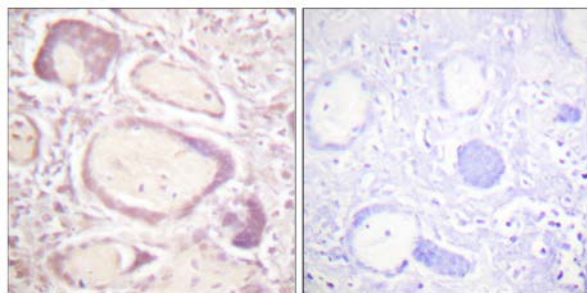
**References:**

Catherine A. Rugg, AACR Meeting Abstracts, Apr 2005; 2005: 1047.

Jianping Gong, Cancer Res., Aug 1994; 54: 4285 - 4288.

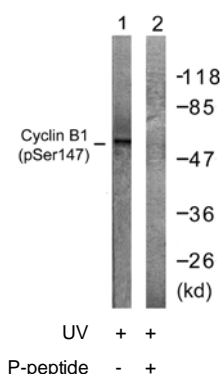
Lourdes A. Gomez, Mol. Cancer Ther., May 2007; 6: 1534 - 1543.

Clare E. Davy, J. Virol., Apr 2005; 79: 3998 - 4011.



P-peptide - +

Immunohistochemistry analysis of paraffin-embedded human placenta tissue using Cyclin B1 (Phospho-Ser147) antibody.



Western blot analysis of extracts from Jurkat cells, treated with UV (15mins), using Cyclin B1 (Phospho-Ser147) antibody.

**For Research Use Only**