



## Cyclin B1 (Ab-147) Antibody

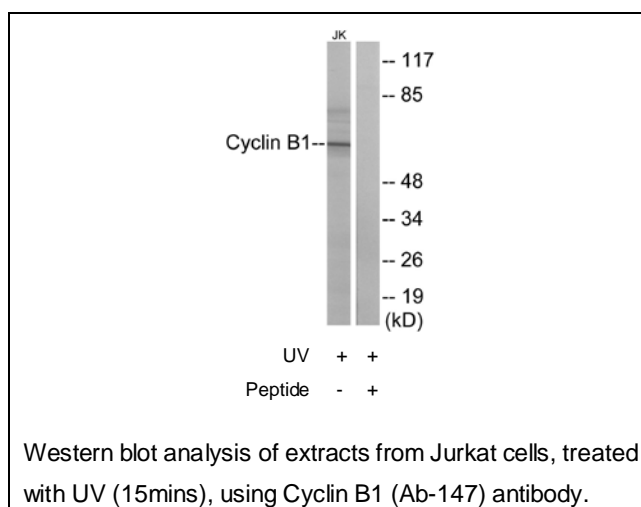
E11-0635B

**Catalog Number:** E11-0635B**Concentration:** 1mg/ml**Swiss-Prot No.:** P14635**Other Names:** CCN-2, CCNB, CCNB1, CCNB1-RS1, CYCB, CYCB1, G2/mitotic-specific cyclin B1**Storage/Stability:** Store at -20°C/1 year**Form of Antibody:** Rabbit IgG in phosphate buffered saline (without  $Mg^{2+}$  and  $Ca^{2+}$ ), pH 7.4, 150mM NaCl, 0.02% sodium azide and 50% glycerol.**Immunogen:** The antiserum was produced against synthesized non-phosphopeptide derived from human Cyclin B1 around the phosphorylation site of serine 147 (A-F-S<sup>P</sup>-D-V).**Purification:** The antibody was affinity-purified from rabbit antiserum by affinity-chromatography using epitope-specific immunogen.**Specificity:** Cyclin B1 (Ab-147) antibody detects endogenous levels of total Cyclin B1 protein.**Reactivity:** Human, Mouse**Applications:** WB: 1:500~1:1000 ELISA: 1:1000**References:**

Catherine A. Rugg, AACR Meeting Abstracts, Apr 2005; 2005: 1047.

Jianping Gong, Cancer Res., Aug 1994; 54: 4285 - 4288.

Lourdes A. Gomez, Mol. Cancer Ther., May 2007; 6: 1534 - 1543.

**For Research Use Only**