



eIF4B (Ab-422) Antibody

E11-0641B**Catalog Number:** E11-0641B**Concentration:** 1mg/ml**Swiss-Prot No.:** P23588**Other Names:** eIF-4B; Eukaryotic translation initiation factor 4B; IF4B**Storage/Stability:** Store at -20 °C/1 year**Form of Antibody:** Rabbit IgG in phosphate buffered saline (without Mg^{2+} and Ca^{2+}), pH 7.4, 150mM NaCl, 0.02% sodium azide and 50% glycerol.**Immunogen:** The antiserum was produced against synthesized non-phosphopeptide derived from human eIF4B around the phosphorylation site of serine 422 (T-G-S^P-E-S).**Purification:** The antibody was affinity-purified from rabbit antiserum by affinity-chromatography using epitope-specific immunogen.**Specificity:** eIF4B (Ab-422) antibody detects endogenous levels of total eIF4B protein.**Reactivity:** Human (Identities = 100%, Positives = 100%);

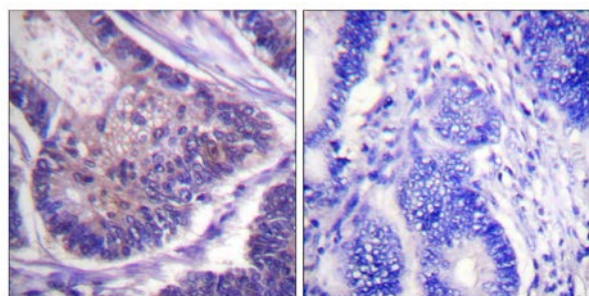
Mouse (Identities = 100%, Positives = 100%);

Applications: WB: 1:500~1:1000 IHC: 1:50~1:100 IF: 1:100~1:500 ELISA: 1:1000**References:**

Milburn S.C., EMBO J. 9:2783-2790(1990).

Ebert L., Submitted (JUN-2004) to the EMBL/GenBank/DDBJ databases.

Suzuki Y., Submitted (APR-2005) to the EMBL/GenBank/DDBJ databases.

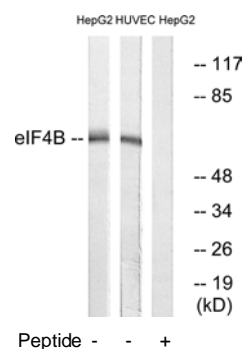


Peptide

-

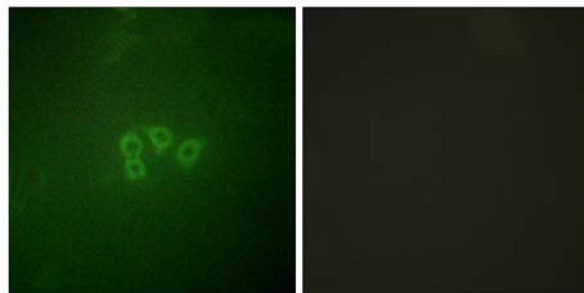
+

Immunohistochemistry analysis of paraffin-embedded human colon carcinoma tissue using eIF4B (Ab-422) antibody.



Western blot analysis of extracts from HepG2 cells and HUVEC cells, using eIF4B (Ab-422) antibody.

For Research Use Only



Peptide

-

+

Immunofluorescence analysis of A549 cells, using eIF4B
(Ab-422) antibody.