



eIF4G Antibody

E11-0642B**Catalog Number:** E11-0642B**Concentration:** 1mg/ml**Swiss-Prot No.:** Q04637**Other Names:** EIF4G1, EIF4GI, Eukaryotic translation initiation factor 4GI, IF4G1, eIF-4-gamma 1, eIF-4G, eIF-4G1, eukaryotic translation initiation factor 4 gamma 1, p220**Storage/Stability:** Store at -20°C/1 year**Form of Antibody:** Rabbit IgG in phosphate buffered saline (without Mg^{2+} and Ca^{2+}), pH 7.4, 150mM NaCl, 0.02% sodium azide and 50% glycerol.**Immunogen:** The antiserum was produced against synthesized peptide derived from Internal of human eIF4G.**Purification:** The antibody was affinity-purified from

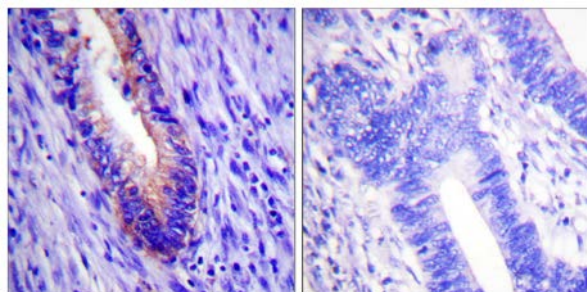
rabbit antiserum by affinity-chromatography using epitope-specific immunogen.

Specificity: eIF4G antibody detects endogenous levels of total eIF4G protein.**Reactivity:** Human (Identities = 100%, Positives = 100%);
Mouse (Identities = 100%, Positives = 100%);
Rat (Identities = 100%, Positives = 100%)**Applications:** IHC: 1:50~1:100 IF: 1:100~1:500
ELISA: 1:5000**References:**

Daniel R. Gallie. J. Biol. Chem., Sep 2001; 276: 36951 - 36960.

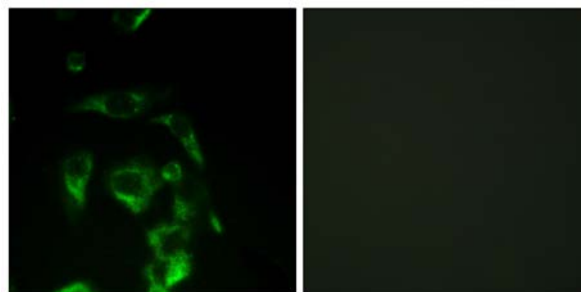
Xiaohong Zhao. J. Biol. Chem., Feb 2003; 278: 4449 - 4457.

Jun Ling. Mol. Cell. Biol., Nov 2002; 22: 7853 - 7867.



Peptide - +

Immunohistochemistry analysis of paraffin-embedded human colon carcinoma tissue using Eif4g antibody.



Peptide - +

Immunofluorescence analysis of HeLa cells, using Eif4g antibody.

For Research Use Only