



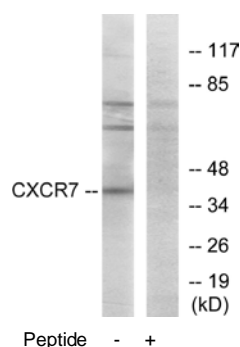
## CXCR7 Antibody

**E11-065G****Catalog Number:** E11-065G**Concentration:** 1mg/ml, 100ug/100uL**Swiss-Prot No.:** P25106**Other Names:** chemokine orphan receptor 1; CXCR-7; CXCR7; G-protein coupled receptor 159; G-protein coupled receptor RDC1; RDC1**Storage/Stability:** Store at -20 °C/1 year**Form of Antibody:** Rabbit IgG in phosphate buffered saline (without Mg<sup>2+</sup> and Ca<sup>2+</sup>), pH 7.4, 150mM NaCl, 0.02% sodium azide and 50% glycerol.**Immunogen:** The antiserum was produced against synthesized peptide derived from C-terminal of human CXCR7.**Purification:** The antibody was affinity-purified from rabbit antiserum by affinity-chromatography using epitope-specific immunogen.**Specificity:** CXCR7 antibody detects endogenous levels of total CXCR7 protein.**Reactivity:** Human, Mouse, Rat**Applications:** WB: 1:500~1:1000 IF: 1:100~1:500  
ELISA: 1:1000**References:**

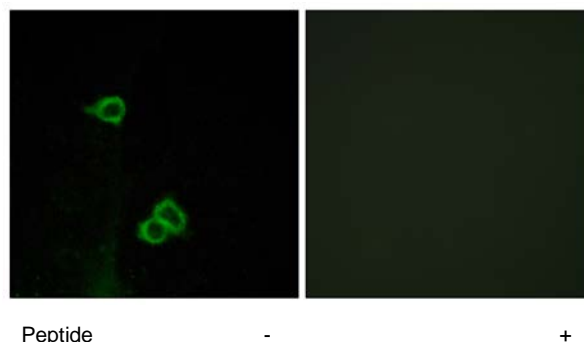
Sreedharan S.P., Proc. Natl. Acad. Sci. U.S.A. 88:4986-4990(1991).

Hillier L.W., Nature 434:724-731(2005).

Nagata S., Trends Pharmacol. Sci. 13:102-103(1992).



Western blot analysis of extracts from COS-7 cells, using CXCR7 antibody.



Immunofluorescence analysis of COS-7 cells, using CXCR7 antibody.

**For Research Use Only**