



IRS-1 Antibody

E11-0668B

Catalog Number: E11-0668B**Concentration:** 1mg/ml**Swiss-Prot No.:** P35568**Other Names:** IRS-1, IRS1, Insulin receptor substrate-1**Storage/Stability:** Store at -20 °C/1 year**Form of Antibody:** Rabbit IgG in phosphate buffered saline (without Mg^{2+} and Ca^{2+}), pH 7.4, 150mM NaCl, 0.02% sodium azide and 50% glycerol.**Immunogen:** The antiserum was produced against synthesized peptide derived from Internal of human IRS-1.**Purification:** The antibody was affinity-purified from rabbit antiserum by affinity-chromatography using

epitope-specific immunogen.

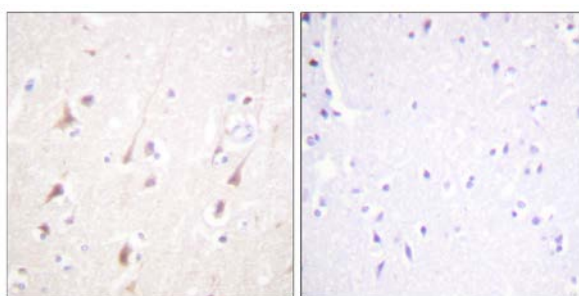
Specificity: IRS-1 antibody detects endogenous levels of total IRS-1 protein.**Reactivity:** Human (Identities = 100%, Positives = 100%)**Applications:** IHC: 1:50~1:100 ELISA: 1:1000**References:**

Joëlle Dupont, Am J Physiol Endocrinol Metab, Feb 1998; 274: E309 - E316.

DG Baskin, Endocrinology, Apr 1994; 134: 1952.

Zhefu Ma, Mol. Cell. Biol., Dec 2006; 26: 9338 - 9351.

Alexandros Tzatsos, J. Biol. Chem., Jun 2007; 282: 18069 - 18082.



Peptide

-

+

Immunohistochemistry analysis of paraffin-embedded human brain tissue using IRS-1 antibody.

For Research Use Only