



## LKB1 (Phospho-Ser428) Antibody

**E11-0672A****Catalog Number:** E11-0672A**Concentration:** 1mg/ml**Swiss-Prot No.:** Q15831**Other Names:** EC 2.7.11.1; kinase LKB1; PJS; Serine/threonine kinase KPM; Serine/threonine protein kinase 11; STK11**All Sites:** Human: Ser428; Mouse: Ser428**Storage/Stability:** Store at -20°C/1 year**Form of Antibody:** Rabbit IgG in phosphate buffered saline (without  $Mg^{2+}$  and  $Ca^{2+}$ ), pH 7.4, 150mM NaCl, 0.02% sodium azide and 50% glycerol.**Immunogen:** The antiserum was produced against synthesized phosphopeptide derived from human LKB1 around the phosphorylation site of serine 428 (R-L-S<sup>P</sup>-A-C).**Purification:** The antibody was affinity-purified from

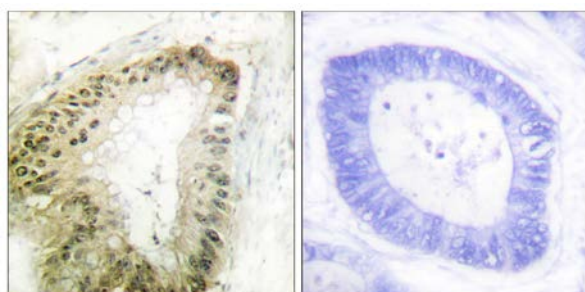
rabbit antiserum by affinity-chromatography using epitope-specific phosphopeptide. The antibody against non-phosphopeptide was removed by chromatography using non-phosphopeptide corresponding to the phosphorylation site.

**Specificity:** LKB1 (Phospho-Ser428) antibody detects endogenous levels of LKB1 only when phosphorylated at serine 428.**Reactivity:** Human, Mouse**Applications:** WB: 1:500~1:1000 IHC: 1:50~1:100  
IF: 1:100~1:500 ELISA: 1:40000**References:**

Jenne D.E., Nat. Genet. 18:38-43(1998).

Bignell G.R., Cancer Res. 58:1384-1386(1998).

Baas A.F., EMBO J. 22:3062-3072(2003).

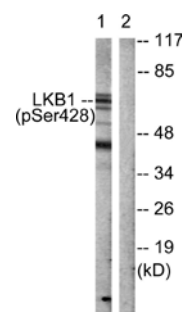


P-peptide

-

+

Immunohistochemistry analysis of paraffin-embedded human colon carcinoma tissue using LKB1 (Phospho-Ser428) antibody.



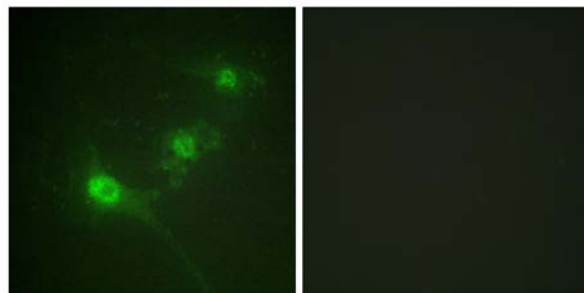
P-peptide

-

+

Western blot analysis of extracts from mouse brain cells, using LKB1 (Phospho-Ser428) antibody.

**For Research Use Only**



P-peptide

-

+

Immunofluorescence analysis of NIH/3T3 cells, using  
LKB1 (Phospho-Ser428) antibody.