

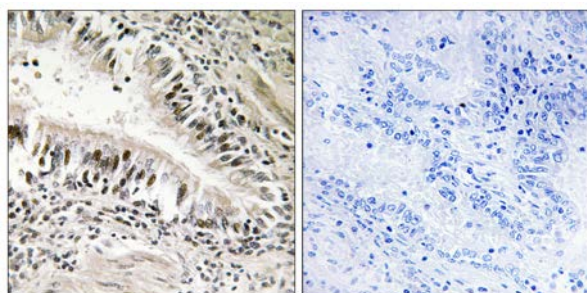


LKB1 Antibody

E11-0672B

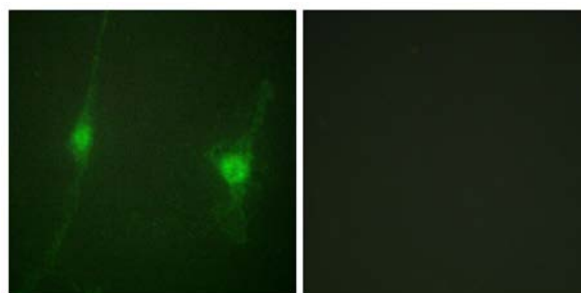
Catalog Number: E11-0672B**Concentration:** 1mg/ml**Swiss-Prot No.:** Q15831**Other Names:** Protein kinase, Ser/Thr (non-receptor), CAMK group, CAMKL family, LKB subfamily**Storage/Stability:** Store at -20 °C/1 year**Form of Antibody:** Rabbit IgG in phosphate buffered saline (without Mg^{2+} and Ca^{2+}), pH 7.4, 150mM NaCl, 0.02% sodium azide and 50% glycerol.**Immunogen:** The antiserum was produced against synthesized peptide derived from Internal of human LKB1.**Purification:** The antibody was affinity-purified from

rabbit antiserum by affinity-chromatography using epitope-specific immunogen.

Specificity: LKB1 antibody detects endogenous levels of total LKB1 protein.**Reactivity:** Human (Identities = 100%, Positives = 100%);
Mouse (Identities = 100%, Positives = 100%)**Applications:** IHC: 1:50~1:100 IF: 1:100~1:500
ELISA: 1:1000**References:**[Jenne D.E.](#), Nat. Genet. 18:38-43(1998).[Bignell G.R.](#), [Cancer Res.](#) 58:1384-1386(1998).[Baas A.F.](#), EMBO J. 22:3062-3072(2003).

Peptide - +

Immunohistochemistry analysis of paraffin-embedded human lung carcinoma tissue using LKB1 antibody.



Peptide - +

Immunofluorescence analysis of NIH/3T3 cells, using LKB1 antibody.

For Research Use Only