



## MEK1 (Ab-286) Antibody

E11-0681B

**Catalog Number:** E11-0681B

**Concentration:** 1mg/ml

**Swiss-Prot No.:** Q02750

**Other Names:** Dual specificity mitogen-activated protein kinase kinase 1, EC 2.7.12.2, ERK activator kinase 1, MAP kinase kinase 1, MAP2K1, MAPK/ERK kinase 1, MAPKK 1, MAPKK1, MEK1, MP2K1, PRKMK1, kinase MEK1

**Storage/Stability:** Store at -20°C/1 year

**Form of Antibody:** Rabbit IgG in phosphate buffered saline (without  $Mg^{2+}$  and  $Ca^{2+}$ ), pH 7.4, 150mM NaCl, 0.02% sodium azide and 50% glycerol.

**Immunogen:** The antiserum was produced against synthesized non-phosphopeptide derived from human MEK1 around the phosphorylation site of threonine 286 (A-E-T<sup>P</sup>-P-P).

**Purification:** The antibody was affinity-purified from rabbit antiserum by affinity-chromatography using epitope-specific immunogen.

**Specificity:** MEK1 (Ab-286) antibody detects endogenous levels of total MEK1 protein.

**Reactivity:** Human, Mouse, Rat

**Applications:** WB: 1:500~1:1000 IHC: 1:50~1:100 ELISA: 1:10000

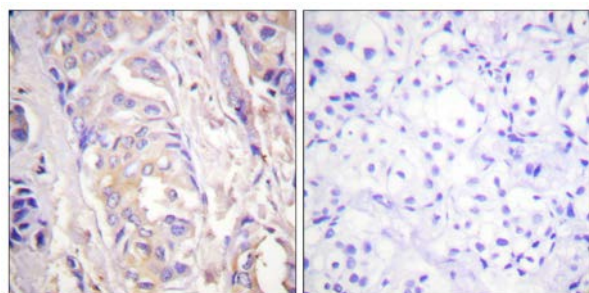
### References:

Shunichi Murakami, Genes & Dev., Feb 2004; 18: 290.

Ronald A. Rimerman, J. Biol. Chem., May 2000; 275: 14736.

Anne C. Marinovic, J. Biol. Chem., May 2002; 277: 16673 - 16681.

Rohit Lal, AACR Meeting Abstracts, Apr 2006; 2006: 687.

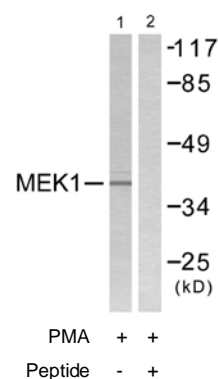


Peptide

-

+

Immunohistochemistry analysis of paraffin-embedded human breast carcinoma tissue using MEK1 (Ab-286) antibody.



Western blot analysis of extracts from NIH/3T3 cells, treated with PMA (250ng/ml, 5mins), using MEK1 (Ab-286) antibody.

**For Research Use Only**