



MSK1 (Ab-360) Antibody

E11-0685B

Catalog Number: E11-0685B

Concentration: 1mg/ml

Swiss-Prot No.: O75582

Other Names: 90 kDa ribosomal protein S6 kinase, polypeptide 5, EC 2.7.11.1, KS6A5, MSPK1, Nuclear mitogen- and stress-activated protein kinase-1, RLPK, RPS6KA5, kinase MSK1, ribosomal protein S6 kinase, polypeptide V

Storage/Stability: Store at -20°C/1 year

Form of Antibody: Rabbit IgG in phosphate buffered saline (without Mg^{2+} and Ca^{2+}), pH 7.4, 150mM NaCl, 0.02% sodium azide and 50% glycerol.

Immunogen: The antiserum was produced against synthesized non-phosphopeptide derived from human MSK1 around the phosphorylation site of serine 360

(T-Y-S^P-P-A).

Purification: The antibody was affinity-purified from rabbit antiserum by affinity-chromatography using epitope-specific immunogen.

Specificity: MSK1 (Ab-360) antibody detects endogenous levels of total MSK1 protein.

Reactivity: Human, Mouse

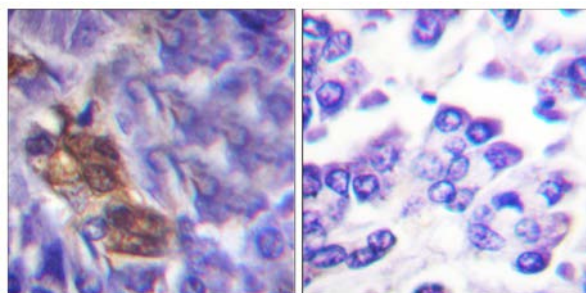
Applications: WB: 1:500~1:1000 IHC: 1:50~1:100
ELISA: 1:1000

References:

Giselle R. Wiggin, Mol. Cell. Biol., Apr 2002; 22: 2871 - 2881.

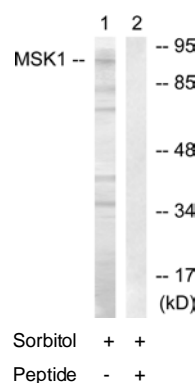
Greg Q. Butcher, J. Neurosci., Jun 2005; 25: 5305 - 5313.

Jason A. Gustin, Am J Physiol Cell Physiol, Mar 2004; 286: C547 - C555.



Peptide - +

Immunohistochemistry analysis of paraffin-embedded human pancreas tissue using MSK1 (Ab-360) antibody.



Western blot analysis of extracts from COS7 cells, treated with Sorbitol (0.4M, 30mins), using MSK1 (Ab-360) antibody.

For Research Use Only