



Mst1/2 (Phospho-Thr183) Antibody

E11-0687A

Catalog Number: E11-0687A

Concentration: 1mg/ml

Swiss-Prot No.: Q13043

Other Names: EC 2.7.11.1, MST-1, Mammalian STE20-like protein kinase 1, STE20-like kinase MST1, STK4, Serine/threonine protein kinase 4, Serine/threonine protein kinase Krs-2, kinase MST1, serine/threonine kinase 4; STE20-like kinase MST1; Yeast Sps1/Ste20-related kinase 3

All Sites: Human: Thr183; Mouse: Thr183

Storage/Stability: Store at -20 °C/1 year

Form of Antibody: Rabbit IgG in phosphate buffered saline (without Mg^{2+} and Ca^{2+}), pH 7.4, 150mM NaCl, 0.02% sodium azide and 50% glycerol.

Immunogen: The antiserum was produced against synthesized phosphopeptide derived from human Mst1/2 around the phosphorylation site of threonine 183

(R-N-T^P-V-I).

Purification: The antibody was affinity-purified from rabbit antiserum by affinity-chromatography using epitope-specific phosphopeptide. The antibody against non-phosphopeptide was removed by chromatography using non-phosphopeptide corresponding to the phosphorylation site.

Specificity: Mst1/2 (Phospho-Thr183) antibody detects endogenous levels of Mst1/2 only when phosphorylated at threonine 183.

Reactivity: Human, Mouse

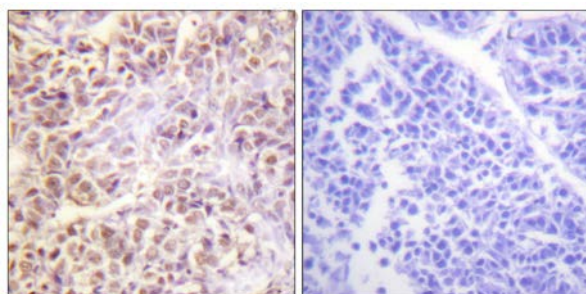
Applications: WB: 1:500~1:1000 IHC: 1:50~1:100
ELISA: 1:40000

References:

Creasy C.L., *J. Biol. Chem.* 270:21695-21700(1995).

Deloukas P., *Nature* 414:865-871(2001).

Cheung W.L., *Cell* 113:507-517(2003).

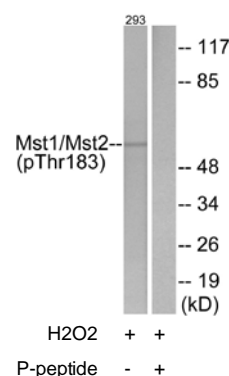


P-peptide

-

+

Immunohistochemistry analysis of paraffin-embedded human liver carcinoma tissue using Mst1/2 (Phospho-Thr183) antibody.



Western blot analysis of extracts from 293 cells, treated with H2O2 (100uM, 15mins), using Mst1/2 (Phospho-Thr183) antibody.

For Research Use Only