



Myosin regulatory light chain 2 (Phospho-Ser18) Antibody

E11-0690A

Catalog Number: E11-0690A

Concentration: 1mg/ml

Swiss-Prot No.: Q9CQL8

Other Names: MLCB, MLRA, MLRM, MRCL3, Myosin RLC, Myosin RLC-A, Myosin regulatory light chain, Myosin regulatory light chain 2, nonsarcomeric, Myosin regulatory light chain 2-A, smooth muscle isoform, RLC, RLC-A

All Sites: Human: Ser18; Mouse: Ser20; Rat: Ser19

Storage/Stability: Store at -20 °C/1 year

Form of Antibody: Rabbit IgG in phosphate buffered saline (without Mg^{2+} and Ca^{2+}), pH 7.4, 150mM NaCl, 0.02% sodium azide and 50% glycerol.

Immunogen: The antiserum was produced against synthesized phosphopeptide derived from human Myosin regulatory light chain 2 around the phosphorylation site of serine 18 (A-T-S^P-N-V).

Purification: The antibody was affinity-purified from

rabbit antiserum by affinity-chromatography using epitope-specific phosphopeptide. The antibody against non-phosphopeptide was removed by chromatography using non-phosphopeptide corresponding to the phosphorylation site.

Specificity: Myosin regulatory light chain 2 (Phospho-Ser18) antibody detects endogenous levels of Myosin regulatory light chain 2 only when phosphorylated at serine 18.

Reactivity: Human, Mouse, Rat

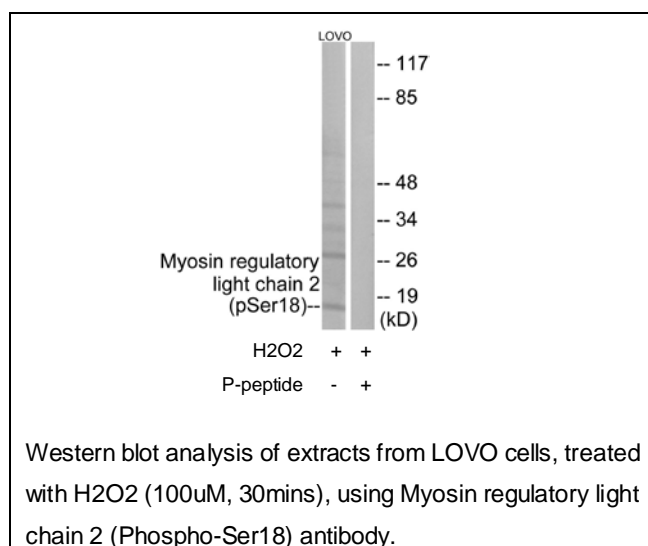
Applications: WB: 1:500~1:1000 IHC: 1:50~1:100
IF: 1:100~1:500 ELISA: 1:20000

References:

[Carninci P., Science 309:1559-1563\(2005\).](#)

The MGC Project Team, [Genome Res. 14:2121-2127\(2004\).](#)

[Lubec G., Submitted \(MAR-2007\) to UniProtKB.](#)



For Research Use Only