



## Myosinregulatorylight chain 2 (Ab-18) Antibody

E11-0690B

**Catalog Number:** E11-0690B

**Concentration:** 1mg/ml

**Swiss-Prot No.:** Q9CQL8

**Other Names:** MLCB, MLRA, MLRM, MRCL3, Myosin RLC, Myosin RLC-A, Myosin regulatory light chain, Myosin regulatory light chain 2, nonsarcomeric, Myosin regulatory light chain 2-A, smooth muscle isoform, RLC, RLC-A

**Storage/Stability:** Store at -20°C/1 year

**Form of Antibody:** Rabbit IgG in phosphate buffered saline (without  $Mg^{2+}$  and  $Ca^{2+}$ ), pH 7.4, 150mM NaCl, 0.02% sodium azide and 50% glycerol.

**Immunogen:** The antiserum was produced against synthesized non-phosphopeptide derived from human Myosin regulatory light chain 2 around the phosphorylation site of serine 18 (A-T-S<sup>P</sup>-N-V).

**Purification:** The antibody was affinity-purified from rabbit antiserum by affinity-chromatography using epitope-specific immunogen.

**Specificity:** Myosin regulatory light chain 2 (Ab-18) antibody detects endogenous levels of total Myosin regulatory light chain 2 protein.

**Reactivity:** Human, Mouse, Rat

**Applications:** WB: 1:500~1:1000 IHC: 1:50~1:100  
IF: 1:100~1:500 ELISA: 1:1000

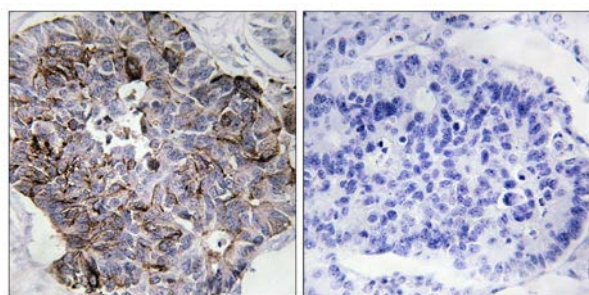
### References:

James Gulick, *Circ. Res.*, May 1997; 80: 655 - 664.

Alice M. Rushforth, *Genetics*, Nov 1998; 150: 1067.

S Navankasattusas, *Mol. Cell. Biol.*, Nov 1994; 14: 7331 - 7339.

Wolfgang Rottbauer, *Circ. Res.*, Aug 2006; 99: 323 - 331.

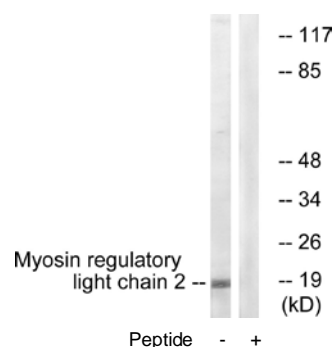


Peptide

-

+

Immunohistochemistry analysis of paraffin-embedded human lung carcinoma tissue using Myosin regulatory light chain 2 (Ab-18) antibody.

Myosin regulatory  
light chain 2 --

Peptide - +

Western blot analysis of extracts from COLO205 cells, using Myosin regulatory light chain 2 (Ab-18) antibody.

**For Research Use Only**