



## p130 Cas (Phospho-Tyr165) Antibody

E11-0695A

**Catalog Number:** E11-0695A

**Concentration:** 1mg/ml

**Swiss-Prot No.:** P56945

**Other Names:** BCA1, BCAR1, Breast cancer anti-estrogen resistance 1 protein, CAS, CRK-associated substrate, CRKAS

**All Sites:** Human: Tyr165; Mouse: Tyr169; Rat: Tyr263

**Storage/Stability:** Store at -20 °C/1 year

**Form of Antibody:** Rabbit IgG in phosphate buffered saline (without  $Mg^{2+}$  and  $Ca^{2+}$ ), pH 7.4, 150mM NaCl, 0.02% sodium azide and 50% glycerol.

**Immunogen:** The antiserum was produced against synthesized phosphopeptide derived from human p130 Cas around the phosphorylation site of tyrosine 165 (D-L-Y<sup>P</sup>-Q-V).

**Purification:** The antibody was affinity-purified from

rabbit antiserum by affinity-chromatography using epitope-specific phosphopeptide. The antibody against non-phosphopeptide was removed by chromatography using non-phosphopeptide corresponding to the phosphorylation site.

**Specificity:** p130 Cas (Phospho-Tyr165) antibody detects endogenous levels of p130 Cas only when phosphorylated at tyrosine 165.

**Reactivity:** Human, Mouse, Rat

**Applications:** WB: 1:500~1:1000 IHC: 1:50~1:100  
ELISA: 1:5000

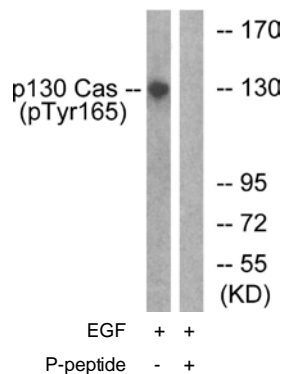
### References:

Sara Cabodi, Cancer Res., May 2006; 66: 4672 - 4680.

Päivi T. Lakkakorpi, J. Biol. Chem., Feb 1999; 274: 4900.

Zhiyuan Zhang, J. Biol. Chem., Aug 1999; 274: 25093.

Erguang Li, J. Biol. Chem., May 2000; 275: 14729.



Western blot analysis of extracts from HepG2 cells, treated with EGF (200ng/ml, 30mins), using p130 Cas (Phospho-Tyr165) antibody.

**For Research Use Only**