



PKC α (Phospho-Thr638) Antibody

E11-0716A

Catalog Number: E11-0716A

Concentration: 1mg/ml

Swiss-Prot No.: P17252

Other Names: EC 2.7.11.13, KPCA, PKC III, PKC-A, PKC-III, PKC-alpha, PRKACA, PRKCA, Protein kinase C, alpha type, kinase PKC-alpha

All Sites: Human: Thr638; Mouse: Thr638; Rat: Thr638

Storage/Stability: Store at -20°C/1 year

Form of Antibody: Rabbit IgG in phosphate buffered saline (without Mg^{2+} and Ca^{2+}), pH 7.4, 150mM NaCl, 0.02% sodium azide and 50% glycerol.

Immunogen: The antiserum was produced against synthesized phosphopeptide derived from human PKC $\alpha/\beta 2$ around the phosphorylation site of threonine 638 (V-L-T^P-P-P).

Purification: The antibody was affinity-purified from rabbit antiserum by affinity-chromatography using

epitope-specific phosphopeptide. The antibody against non-phosphopeptide was removed by chromatography using non-phosphopeptide corresponding to the phosphorylation site.

Specificity: PKC α (Phospho-Thr638) antibody detects endogenous levels of PKC α only when phosphorylated at threonine 638.

Reactivity: Human, Mouse, Rat

Applications: WB: 1:500~1:1000 IHC: 1:50~1:100
ELISA: 1:20000

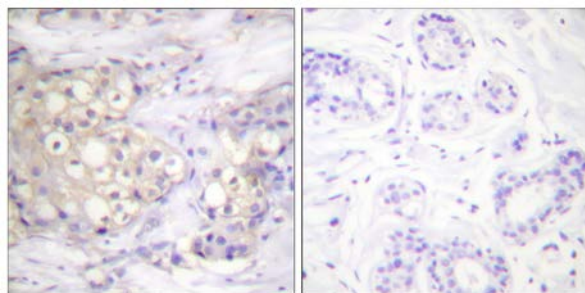
References:

Maria Nikodemova, J. Biol. Chem., May 2007; 282: 15208 - 15216.

Pedro J. Cejas, J. Biol. Chem., Aug 2005; 280: 28412 - 28423.

Dan Chen, J. Biol. Chem., Feb 2004; 279: 4829 - 4839.

Nicole R. Murray, J. Cell Biol., May 1999; 145: 699.

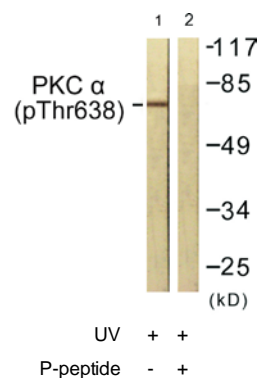


P-peptide

-

+

Immunohistochemistry analysis of paraffin-embedded human breast carcinoma tissue using PKC α (Phospho-Thr638) antibody.



Western blot analysis of extracts from NIH/3T3 cells, treated with UV (15mins), using PKC α (Phospho-Thr638) antibody.

For Research Use Only