



PKC δ (Phospho-Thr505) Antibody

E11-0717A

Catalog Number: E11-0717A

Concentration: 1mg/ml

Swiss-Prot No.: Q05655

Other Names: EC 2.7.11.13, KPCD, PKC-delta, PRKCD, kinase PKC-delta, nPKC-delta

All Sites: Human: Thr505; Mouse: Thr505; Rat: Thr505

Storage/Stability: Store at -20 °C/1 yea

Form of Antibody: Rabbit IgG in phosphate buffered saline (without Mg^{2+} and Ca^{2+}), pH 7.4, 150mM NaCl, 0.02% sodium azide and 50% glycerol.

Immunogen: The antiserum was produced against synthesized phosphopeptide derived from human PKC δ around the phosphorylation site of threonine 505 (R-A-S^P-T-F).

Purification: The antibody was affinity-purified from rabbit antiserum by affinity-chromatography using epitope-specific phosphopeptide. The antibody against

non-phosphopeptide was removed by chromatography using non-phosphopeptide corresponding to the phosphorylation site.

Specificity: PKC δ (Phospho-Thr505) antibody detects endogenous levels of PKC δ only when phosphorylated at threonine 505.

Reactivity: Human, Mouse, Rat

Applications: WB: 1:500~1:1000 IHC: 1:50~1:100
ELISA: 1:20000

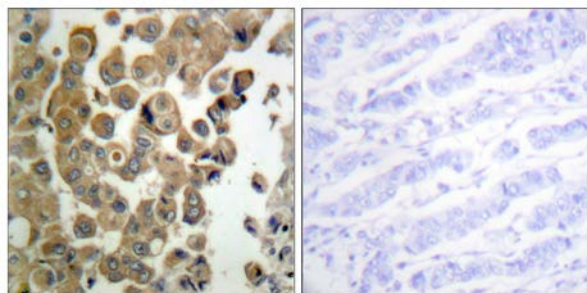
References:

J. J. Peluso, Endocrinology, Oct 2001; 142: 4203.

Peter Hampson, Blood, Aug 2005; 106: 1362 - 1368.

Peter Hampson, AACR Meeting Abstracts, Apr 2005; 2005: 1262.

Mohammad Asghar, Am J Physiol Renal Physiol, Dec 2003; 285: 1100.

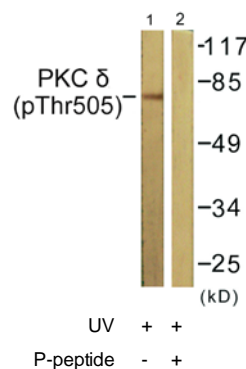


P-peptide

-

+

Immunohistochemistry analysis of paraffin-embedded human breast carcinoma tissue using PKC δ (Phospho-Thr505) antibody.



Western blot analysis of extracts from NIH/3T3 cells, treated with UV (15mins), using PKC δ (Phospho-Thr505) antibody.

For Research Use Only