



PKC θ (Phospho-Thr538) Antibody

E11-0719A

Catalog Number: E11-0719A

Concentration: 1mg/ml

Swiss-Prot No.: Q04759

Other Names: EC 2.7.11.13, KPCT, PKC-theta, PKCQ, PRKCQ, PRKCT, Protein kinase C, theta type, kinase PKC-theta, nPKC-theta

All Sites: Human: Thr538; Mouse: Thr538

Storage/Stability: Store at -20 °C/1 year

Form of Antibody: Rabbit IgG in phosphate buffered saline (without Mg^{2+} and Ca^{2+}), pH 7.4, 150mM NaCl, 0.02% sodium azide and 50% glycerol.

Immunogen: The antiserum was produced against synthesized phosphopeptide derived from human PKC θ around the phosphorylation site of threonine 538 (T-N-T^P-F-C).

Purification: The antibody was affinity-purified from rabbit

antiserum by affinity-chromatography using epitope-specific phosphopeptide. The antibody against non-phosphopeptide was removed by chromatography using non-phosphopeptide corresponding to the phosphorylation site.

Specificity: PKC θ (Phospho-Thr538) antibody detects endogenous levels of PKC θ only when phosphorylated at threonine 538.

Reactivity: Human, Mouse

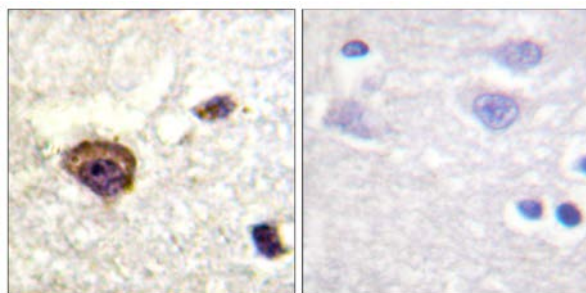
Applications: WB: 1:500~1:1000 IHC: 1:50~1:100
ELISA: 1:5000

References:

Baier G., J. Biol. Chem. 268:4997-5004(1993).

Deloukas P., Nature 429:375-381(2004).

Wissing J., Mol. Cell. Proteomics 6:537-547(2007).

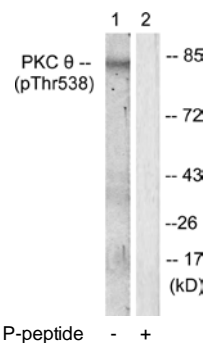


P-peptide

-

+

Immunohistochemistry analysis of paraffin-embedded human brain tissue using PKC θ (Phospho-Thr538) antibody.



P-peptide

-

+

Western blot analysis of extracts from Jurkat cells, using PKC θ (Phospho-Thr538) antibody.

For Research Use Only