



SHIP1 (Phospho-Tyr1021) Antibody

(P-L-Y^P-G-S).

E11-0738A

Catalog Number: E11-0738A

Concentration: 1mg/ml

Swiss-Prot No.: Q92835

Other Names: EC 3.1.3.n1; inositol

polyphosphate-5-phosphatase of 145 kDa; INPP5D;

p150Ship; phosphatidylinositol-3,4,5-trisphosphate

5-phosphatase 1; SH2 domain-containing inositol

phosphatase 1; SH2-containing inositol 5'-phosphatase 1;

SHIP-1; SHIP1; SIP-145

All Sites: Human: Tyr1021; Mouse: Tyr1020

Storage/Stability: Store at -20 °C/1 year

Form of Antibody: Rabbit IgG in phosphate buffered saline (without Mg²⁺ and Ca²⁺), pH 7.4, 150mM NaCl, 0.02% sodium azide and 50% glycerol.

Immunogen: The antiserum was produced against synthesized phosphopeptide derived from human SHIP1 around the phosphorylation site of tyrosine 1021

Purification: The antibody was affinity-purified from rabbit antiserum by affinity-chromatography using epitope-specific phosphopeptide. The antibody against non-phosphopeptide was removed by chromatography using non-phosphopeptide corresponding to the phosphorylation site.

Specificity: SHIP1 (Phospho-Tyr1021) antibody detects endogenous levels of SHIP1 only when phosphorylated at tyrosine 1021.

Reactivity: Human, Mouse

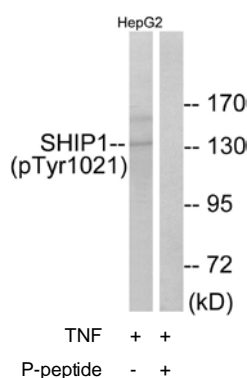
Applications: WB: 1:500~1:1000 ELISA: 1:40000

References:

Drayer A.L., Biochem. Biophys. Res. Commun. 225:243-249(1996).

Ware M.D., Blood 88:2833-2840(1996).

Kavanaugh W.M., Curr. Biol. 6:438-445(1996).



Western blot analysis of extracts from HepG2 cells, treated with TNF (200ng/ml, 30mins), using SHIP1 (Phospho-Tyr1021) antibody.

For Research Use Only