



## Arachidonate 5 Lipoxygenase (Phospho-Ser271) Antibody

E11-0769A

**Catalog Number:** E11-0769A**Concentration:** 1mg/ml**Swiss-Prot No.:** P09917**Other Names:** 5-lipoxygenase, ALOX5, Arachidonate 5-lipoxygenase, EC 1.13.11.34, LOG5, LOX5**All Sites:** Human: Ser272; Mouse: Ser272; Rat: Ser271**Storage/Stability:** Store at -20 °C/1 year**Form of Antibody:** Rabbit IgG in phosphate buffered saline (without  $Mg^{2+}$  and  $Ca^{2+}$ ), pH 7.4, 150mM NaCl, 0.02% sodium azide and 50% glycerol.**Immunogen:** The antiserum was produced against synthesized phosphopeptide derived from human Arachidonate 5 lipoxygenase around the phosphorylation site of serine 271 (Q-L-S<sup>P</sup>-L-E).**Purification:** The antibody was affinity-purified from rabbit antiserum by affinity-chromatography using

epitope-specific phosphopeptide. The antibody against non-phosphopeptide was removed by chromatography using non-phosphopeptide corresponding to the phosphorylation site.

**Specificity:** Arachidonate 5 Lipoxygenase (Phospho-Ser271) antibody detects endogenous levels of Arachidonate 5 lipoxygenase only when phosphorylated at serine 271.

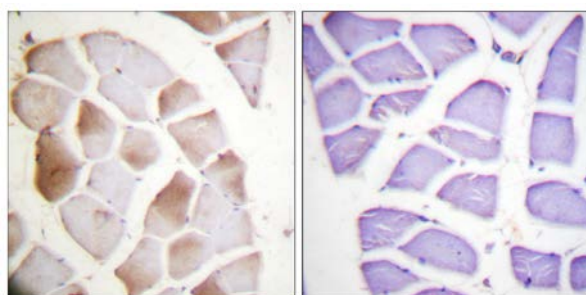
**Reactivity:** Human, Mouse, Rat**Applications:** WB: 1:500~1:1000 IHC: 1:50~1:100  
ELISA: 1:10000**References:**

RJ Boado, PNAS, Oct 1992; 89: 9044.

K Ochi, J. Biol. Chem., May 1983; 258: 5754 - 5758.

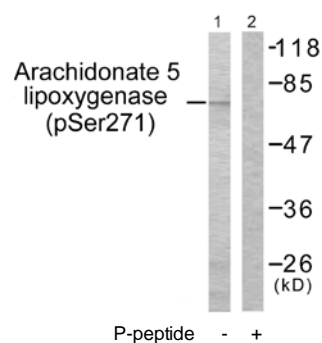
N Ueda, J. Biol. Chem., Jun 1986; 261: 7982 - 7988.

Jagadananda Ghosh, PNAS, Oct 1998; 95: 13182.



P-peptide - +

Immunohistochemistry analysis of paraffin-embedded human skeletal muscle tissue using Arachidonate 5 Lipoxygenase (Phospho-Ser271) antibody.



P-peptide - +

Western blot analysis of extracts from HuvEc cells, using Arachidonate 5 Lipoxygenase (Phospho-Ser271) antibody.

**For Research Use Only**