



## A-RAF (Ab-301/302) Antibody

E11-0770B

**Catalog Number:** E11-0770B

**Concentration:** 1mg/ml

**Swiss-Prot No.:** P10398

**Other Names:** A-RAF, A-Raf proto-oncogene serine/threonine-protein kinase, A-raf-1, ARAF, ARAF1, EC 2.7.11.1, PKS, PKS2, Proto-oncogene Pks, Raf, kinase A-Raf

**Storage/Stability:** Store at -20°C/1 year

**Form of Antibody:** Rabbit IgG in phosphate buffered saline (without Mg<sup>2+</sup> and Ca<sup>2+</sup>), pH 7.4, 150mM NaCl, 0.02% sodium azide and 50% glycerol.

**Immunogen:** The antiserum was produced against synthesized non-phosphopeptide derived from human A-RAF around the phosphorylation site of tyrosine 301/tyrosine 302 (G-Y<sup>P</sup>-W-E).

**Purification:** The antibody was affinity-purified from

rabbit antiserum by affinity-chromatography using epitope-specific immunogen.

**Specificity:** A-RAF (Ab-301/302) antibody detects endogenous levels of total A-RAF protein.

**Reactivity:** Human, Mouse, Rat

**Applications:** WB: 1:500~1:1000 IHC: 1:50~1:100  
ELISA: 1:20000

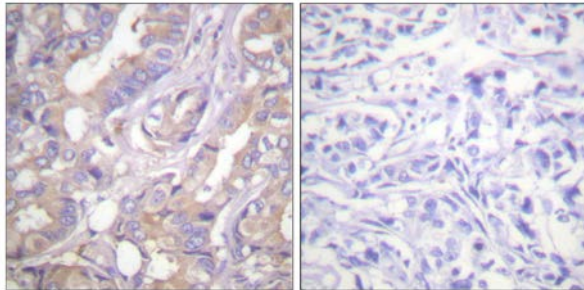
**References:**

Oliver G. Rössler. Am J Physiol Cell Physiol, May 2004; 286: C1118 - C1129.

Marie A. Bogoyevitch. J. Biol. Chem., Nov 1995; 270: 26303.

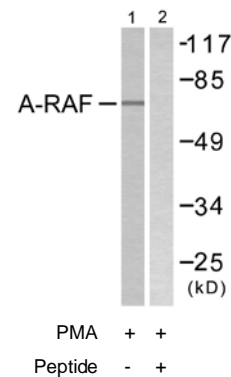
Weicheng Liu. J. Biol. Chem., Mar 2004; 279: 10167 - 10175.

M Huleihel. Mol. Cell. Biol., Jul 1986; 6: 2655 - 2662.



Peptide                      -                      +

Immunohistochemistry analysis of paraffin-embedded human breast carcinoma tissue using A-RAF (Ab-301/302) antibody.



Western blot analysis of extracts from HeLa cells, treated with PMA (125ng/ml, 30mins), using A-RAF (Ab-301/302) antibody.

**For Research Use Only**