



## Ataxin 1 (Phospho-Ser776) Antibody

E11-0771A

**Catalog Number:** E11-0771A

**Concentration:** 1mg/ml

**Swiss-Prot No.:** P54253

**Other Names:** ATX1, ATXN1, SCA1, Spinocerebellar ataxia type 1 protein, Spinocerebellar ataxia type 1 protein homolog

**All Sites:** Human: Ser776; Mouse: Ser752

**Storage/Stability:** Store at -20 °C/1 year

**Form of Antibody:** Rabbit IgG in phosphate buffered saline (without  $Mg^{2+}$  and  $Ca^{2+}$ ), pH 7.4, 150mM NaCl, 0.02% sodium azide and 50% glycerol.

**Immunogen:** The antiserum was produced against synthesized phosphopeptide derived from human Ataxin 1 around the phosphorylation site of serine 776 (R-W-S<sup>P</sup>-A-P).

**Purification:** The antibody was affinity-purified from rabbit antiserum by affinity-chromatography using epitope-specific phosphopeptide. The antibody against non-phosphopeptide was removed by chromatography using non-phosphopeptide corresponding to the phosphorylation site.

**Specificity:** Ataxin 1 (Phospho-Ser776) antibody detects endogenous levels of Ataxin 1 only when phosphorylated at serine 776.

**Reactivity:** Human, Mouse

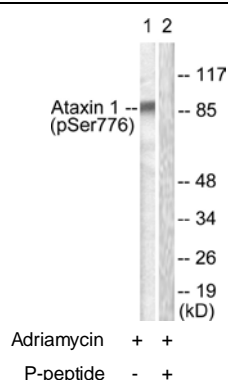
**Applications:** WB: 1:500~1:1000 IF: 1:100~1:500 ELISA: 1:10000

### References:

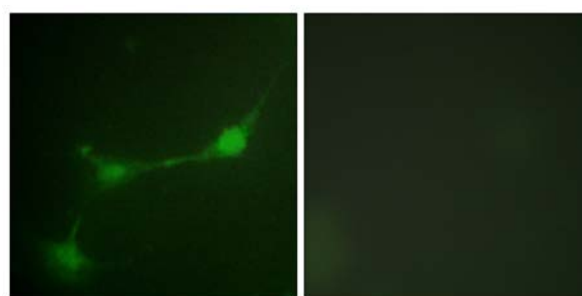
Banfi S., Nat. Genet. 7:513-519(1994).

Mungall A.J., Nature 425:805-811(2003).

Quan F., Hum. Mol. Genet. 4:2411-2413(1995).



Western blot analysis of extracts from HepG2 cells, treated with Adriamycin (0.5uM, 5hours), using Ataxin 1 (Phospho-Ser776) antibody.



Immunofluorescence analysis of NIH/3T3 cells, using Ataxin 1 (Phospho-Ser776) antibody.

**For Research Use Only**