



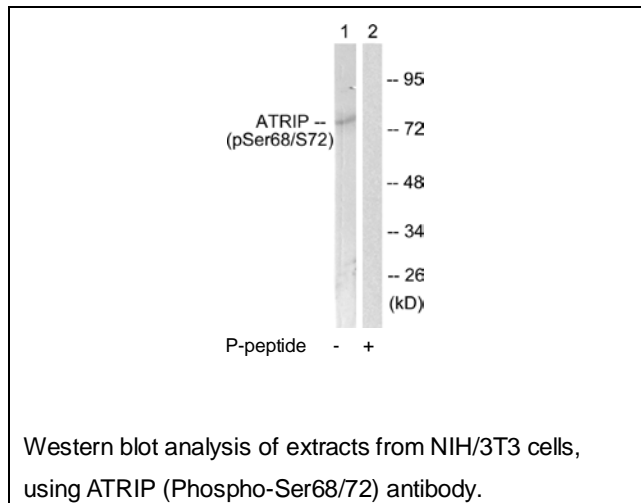
ATRIP (Phospho-Ser68/72) Antibody

E11-0772A**Catalog Number:** E11-0772A**Concentration:** 1mg/ml**Swiss-Prot No.:** Q8WXE1**Other Names:** ATIP, ATM and Rad3 related interacting protein, ATR-interacting protein, TREX1**All Sites:** Human: Ser68/72; Mouse: Ser69/73; Rat: Ser69/73**Storage/Stability:** Store at -20 °C/1 year**Form of Antibody:** Rabbit IgG in phosphate buffered saline (without Mg^{2+} and Ca^{2+}), pH 7.4, 150mM NaCl, 0.02% sodium azide and 50% glycerol.**Immunogen:** The antiserum was produced against synthesized phosphopeptide derived from human ATRIP around the phosphorylation site of serine 68/72 (L-A-S^P-Q-A).**Purification:** The antibody was affinity-purified from rabbit antiserum by affinity-chromatography using epitope-specific phosphopeptide. The antibody against non-phosphopeptide was removed by chromatography using non-phosphopeptide corresponding to the phosphorylation site.**Specificity:** ATRIP (Phospho-Ser68/72) antibody detects endogenous levels of ATRIP only when phosphorylated at serine 68/72.**Reactivity:** Human, Mouse, Rat**Applications:** WB: 1:500~1:1000 ELISA: 1:40000**References:**

Cortez D., Science 294:1713-1716(2001).

Ota T., Nat. Genet. 36:40-45(2004).

Zou L., Science 300:1542-1548(2003).

**For Research Use Only**