



ATRIP (Ab-68/72) Antibody

E11-0772B

Catalog Number: E11-0772B

Concentration: 1mg/ml

Swiss-Prot No.: Q8WXE1

Other Names: ATIP, ATM and Rad3 related interacting protein, ATR-interacting protein, TREX1

Storage/Stability: Store at -20°C/1 year

Form of Antibody: Rabbit IgG in phosphate buffered saline (without Mg^{2+} and Ca^{2+}), pH 7.4, 150mM NaCl, 0.02% sodium azide and 50% glycerol.

Immunogen: The antiserum was produced against synthesized non-phosphopeptide derived from human ATRIP around the phosphorylation site of serine 68/serine72 (L-A-S^P-Q-A).

Purification: The antibody was affinity-purified from rabbit antiserum by affinity-chromatography using

epitope-specific immunogen.

Specificity: ATRIP (Ab-68/72) antibody detects endogenous levels of total ATRIP protein.

Reactivity: Human, Mouse, Rat

Applications: WB: 1:500~1:1000 IHC: 1:50~1:100
IF: 1:100~1:500 ELISA: 1:1000

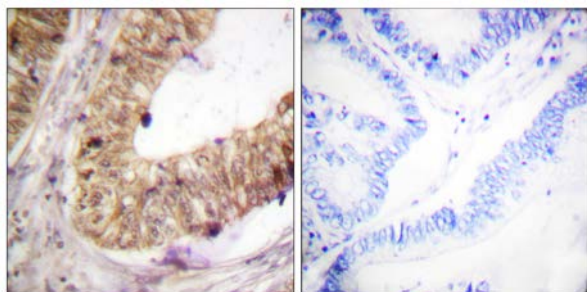
References:

Heather L. Ball, Mol. Cell. Biol., May 2007; 27: 3367 - 3377.

Jeremy S. Myers, Cancer Res., Jul 2007; 67: 6685 - 6690.

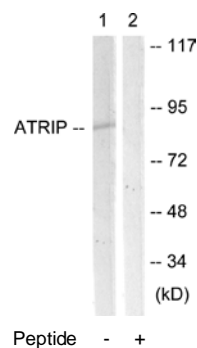
Heather L. Ball, Mol. Biol. Cell, May 2005; 16: 2372 - 2381.

Monica Venere, Cancer Res., Jul 2007; 67: 6100 - 6105.



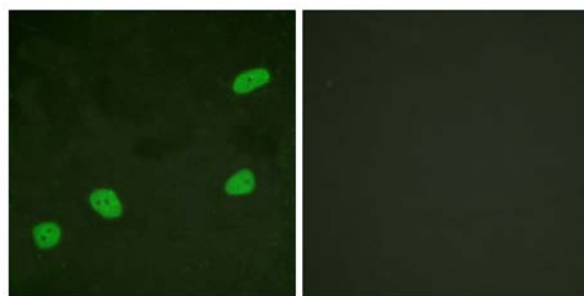
Peptide - +

Immunohistochemistry analysis of paraffin-embedded human lung carcinoma tissue using ATRIP (Ab-68/72) antibody.



Western blot analysis of extracts from NIH/3T3 cells, using ATRIP (Ab-68/72) antibody.

For Research Use Only



Peptide

-

+

Immunofluorescence analysis of HeLa cells, using ATRIP
(Ab-68/72) antibody.