



BCL-2 (Phospho-Thr69) Antibody

E11-0774A**Catalog Number:** E11-0774A**Concentration:** 1mg/ml**Swiss-Prot No.:** P10415**Other Names:** Apoptosis regulator Bcl-2, BCL2**All Sites:** Human: Thr69**Storage/Stability:** Store at -20 °C/1 year**Form of Antibody:** Rabbit IgG in phosphate buffered saline (without Mg^{2+} and Ca^{2+}), pH 7.4, 150mM NaCl, 0.02% sodium azide and 50% glycerol.**Immunogen:** The antiserum was produced against synthesized phosphopeptide derived from human BCL-2 around the phosphorylation site of threonine 69 (A-R-T^P-S-P).**Purification:** The antibody was affinity-purified from rabbit antiserum by affinity-chromatography using epitope-specific phosphopeptide. The antibody against

non-phosphopeptide was removed by chromatography using non-phosphopeptide corresponding to the phosphorylation site.

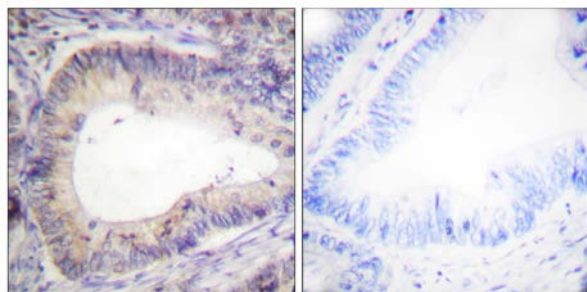
Specificity: BCL-2 (Phospho-Thr69) antibody detects endogenous levels of BCL-2 only when phosphorylated at threonine 69.**Reactivity:** Human**Applications:** IHC: 1:50~1:100 IF: 1:100~1:500
ELISA: 1:20000**References:**

H. Kurosawa, Am J Physiol Gastrointest Liver Physiol, Jun 1997; 272: 1587.

JR Park, Blood, Aug 1995; 86: 868 - 876.

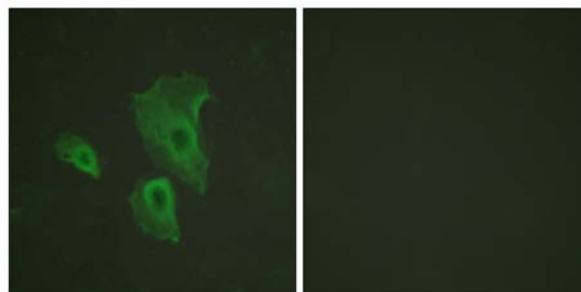
A Plettenberg, Am. J. Pathol., Mar 1995; 146: 651.

JM Ben-Ezra, Am. J. Pathol., Nov 1994; 145: 1036.



P-peptide - +

Immunohistochemistry analysis of paraffin-embedded human colon carcinoma tissue using BCL-2 (Phospho-Thr69) antibody.



P-peptide - +

Immunofluorescence analysis of HeLa cells, using BCL-2 (Phospho-Thr69) antibody.

For Research Use Only