



BCL-XL (Phospho-Thr47) Antibody

E11-0775A

Catalog Number: E11-0775A

Concentration: 1mg/ml

Swiss-Prot No.: Q07817

Other Names: Apoptosis regulator Bcl-X, BCL2L, BCL2L1, BCLX, BCL2L, Bcl-2-like 1 protein

All Sites: Human: Thr47; Mouse: Thr47; Rat: Thr47

Storage/Stability: Store at -20 °C year

Form of Antibody: Rabbit IgG in phosphate buffered saline (without Mg^{2+} and Ca^{2+}), pH 7.4, 150mM NaCl, 0.02% sodium azide and 50% glycerol.

Immunogen: The antiserum was produced against synthesized phosphopeptide derived from human BCL-XL around the phosphorylation site of threonine 47 (M-E-T^P-P-S).

Purification: The antibody was affinity-purified from rabbit antiserum by affinity-chromatography using

epitope-specific phosphopeptide. The antibody against non-phosphopeptide was removed by chromatography using non-phosphopeptide corresponding to the phosphorylation site.

Specificity: BCL-XL (Phospho-Thr47) antibody detects endogenous levels of BCL-XL only when phosphorylated at threonine 47.

Reactivity: Human, Mouse, Rat

Applications: WB: 1:500~1:1000 IHC: 1:50~1:100
IF: 1:100~1:500 ELISA: 1:40000

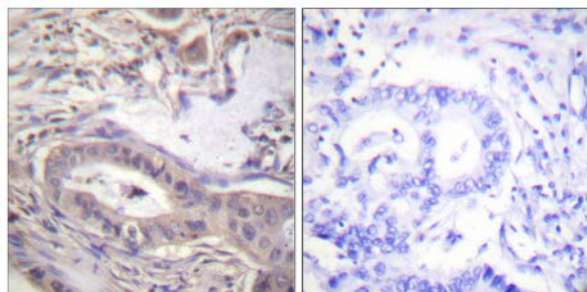
References:

KE Foreman, Am. J. Pathol., Sep 1996; 149: 795.

Mariola Kurowska, J. Immunol., Aug 2002; 169: 1760.

Yun Dai, Mol. Pharmacol., Dec 2003; 64: 1402.

Charles Perkins, Blood, Feb 2000; 95: 1014 - 1022.

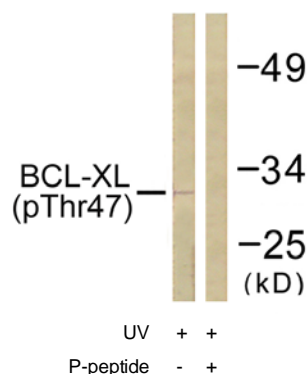


P-peptide

-

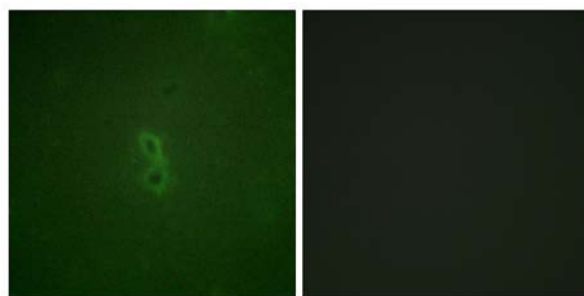
+

Immunohistochemistry analysis of paraffin-embedded human lung carcinoma tissue using BCL-XL (Phospho-Thr47) antibody.



Western blot analysis of extracts from 293 cells, treated with UV (30mins), using BCL-XL (Phospho-Thr47) antibody.

For Research Use Only



P-peptide

-

+

Immunofluorescence analysis of NIH/3T3 cells, using
BCL-XL (Phospho-Thr47) antibody.