



## Bcr (Phospho-Tyr360) Antibody

E11-0776A

**Catalog Number:** E11-0776A

**Concentration:** 1mg/ml

**Swiss-Prot No.:** P11274

**Other Names:** BCR, BCR protein, BCR1, Breakpoint cluster region protein, EC 2.7.11.1

**All Sites:** Human: Tyr360; Mouse: Tyr151; Rat: Tyr292

**Storage/Stability:** Store at -20 °C

**Form of Antibody:** Rabbit IgG in phosphate buffered saline (without Mg<sup>2+</sup> and Ca<sup>2+</sup>), pH 7.4, 150mM NaCl, 0.02% sodium azide and 50% glycerol.

**Immunogen:** The antiserum was produced against synthesized phosphopeptide derived from human Bcr around the phosphorylation site of tyrosine 360 (T-T-Y<sup>P</sup>-R-M).

**Purification:** The antibody was affinity-purified from rabbit antiserum by affinity-chromatography using

epitope-specific phosphopeptide. The antibody against non-phosphopeptide was removed by chromatography using non-phosphopeptide corresponding to the phosphorylation site.

**Specificity:** Bcr (Phospho-Tyr360) antibody detects endogenous levels of Bcr only when phosphorylated at tyrosine 360.

**Reactivity:** Human, Mouse, Rat

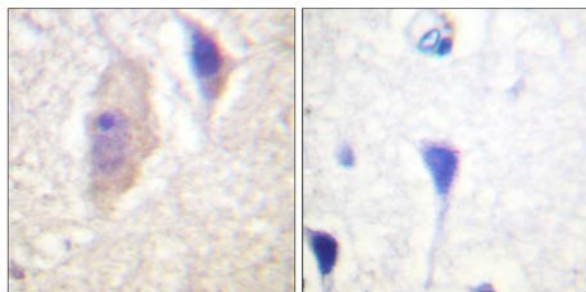
**Applications:** WB: 1:500~1:1000 IHC: 1:50~1:100  
IF: 1:100~1:500 ELISA: 1:40000

### References:

Charles Perkins, Blood, Feb 2000; 95: 1014 - 1022.

Peter Paschka, Blood (ASH Annual Meeting Abstracts), Nov 2004; 104: 1013.

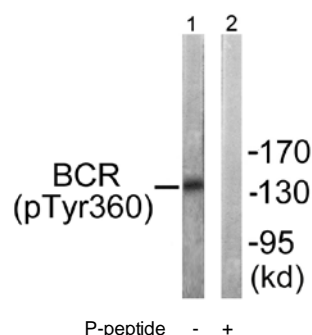
Matthias Mayerhofer, Blood, Nov 2002; 100: 3767 - 3775.  
S S Clark, J. Virol., Oct 1993; 67: 6033 - 6046.



P-peptide -

+

Immunohistochemistry analysis of paraffin-embedded human brain tissue using Bcr (Phospho-Tyr360) antibody.

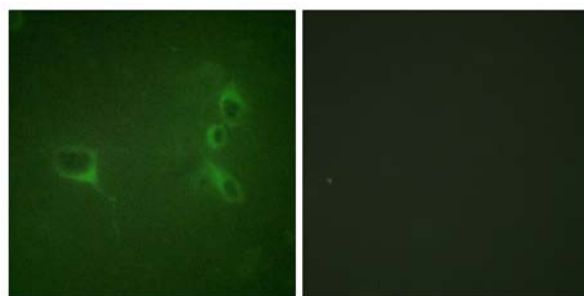


P-peptide -

+

Western blot analysis of extracts from COS7 cells, using Bcr (Phospho-Tyr360) antibody.

**For Research Use Only**



P-peptide

-

+

Immunofluorescence analysis of NIH/3T3 cells, using Bcr (Phospho-Tyr360) antibody.