



## BCR Antibody

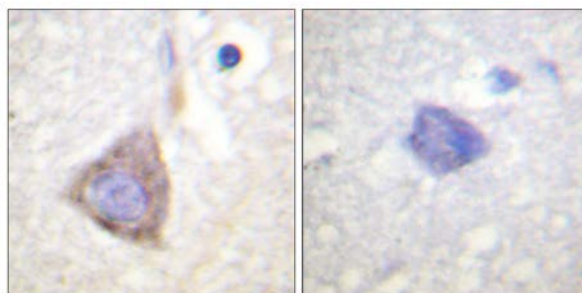
**E11-0776B****Catalog Number:** E11-0776B**Concentration:** 1mg/ml**Swiss-Prot No.:** P11274**Other Names:** BCR, BCR protein, BCR1, Breakpoint cluster region protein, EC 2.7.11.1**Storage/Stability:** Store at -20°C/1 year**Form of Antibody:** Rabbit IgG in phosphate buffered saline (without  $Mg^{2+}$  and  $Ca^{2+}$ ), pH 7.4, 150mM NaCl, 0.02% sodium azide and 50% glycerol.**Immunogen:** The antiserum was produced against synthesized peptide derived from Internal of human BCR.**Purification:** The antibody was affinity-purified from rabbit antiserum by affinity-chromatography using epitope-specific immunogen.**Specificity:** BCR antibody detects endogenous levels of total BCR protein.**Reactivity:** Human (Identities = 100%, Positives = 100%);  
Mouse (Identities = 100%, Positives = 100%)**Applications:** IHC: 1:50~1:100    ELISA: 1:1000**References:**

Charles Perkins, Blood, Feb 2000; 95: 1014 - 1022.

Peter Paschka, Blood (ASH Annual Meeting Abstracts), Nov 2004; 104: 1013.

Matthias Mayerhofer, Blood, Nov 2002; 100: 3767 - 3775.

S S Clark, J. Virol., Oct 1993; 67: 6033 - 6046.



Peptide

-

+

Immunohistochemistry analysis of paraffin-embedded human brain tissue using BCR antibody.

**For Research Use Only**