



Bloom Syndrome Protein (Phospho-Thr99) Antibody

E11-0778A

Catalog Number: E11-0778A**Concentration:** 1mg/ml**Swiss-Prot No.:** P54132**Other Names:** Bloom's syndrome protein, DNA helicase, RecQ-like, type 2, EC 3.6.1.-, RECQ2, RECQL3, RecQ protein-like 3**All Sites:** Human: Thr99**Storage/Stability:** Store at -20°C/1 year**Form of Antibody:** Rabbit IgG in phosphate buffered saline (without Mg^{2+} and Ca^{2+}), pH 7.4, 150mM NaCl, 0.02% sodium azide and 50% glycerol.**Immunogen:** The antiserum was produced against synthesized phosphopeptide derived from human Bloom Syndrome Protein around the phosphorylation site of threonine 99 (Q-E-T^P-Q-R).**Purification:** The antibody was affinity-purified from

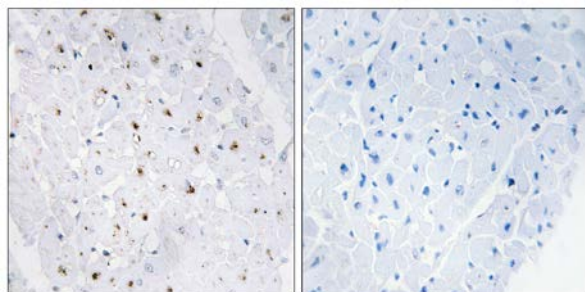
rabbit antiserum by affinity-chromatography using epitope-specific phosphopeptide. The antibody against non-phosphopeptide was removed by chromatography using non-phosphopeptide corresponding to the phosphorylation site.

Specificity: Bloom Syndrome Protein (Phospho-Thr99) antibody detects endogenous levels of Bloom Syndrome Protein only when phosphorylated at threonine 99.**Reactivity:** Human**Applications:** WB: 1:500~1:1000 IHC: 1:50~1:100
IF: 1:100~1:500 ELISA: 1:40000**References:**

Ellis N.A., Cell 83:655-666(1995).

Karow J.K., J. Biol. Chem. 272:30611-30614(1997).

Pichierri P., EMBO J. 23:3154-3163(2004).

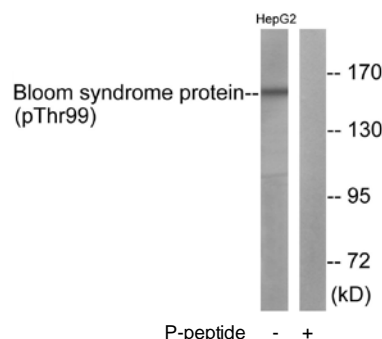


P-peptide

-

+

Immunohistochemistry analysis of paraffin-embedded human heart tissue using Bloom Syndrome Protein (Phospho-Thr99) antibody.



Western blot analysis of extracts from HepG2 cells, using Bloom Syndrome Protein (Phospho-Thr99) antibody.

For Research Use Only