



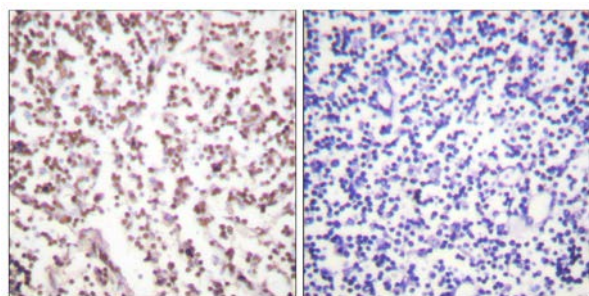
Bloom Syndrome Antibody

E11-0778B**Catalog Number:** E11-0778B**Concentration:** 1mg/ml**Swiss-Prot No.:** P54132**Other Names:** Bloom's syndrome protein, DNA helicase, RecQ-like, type 2, EC 3.6.1.-, RECQ2, RECQL3, RecQ protein-like 3**Storage/Stability:** Store at -20 °C/1 year**Form of Antibody:** Rabbit IgG in phosphate buffered saline (without Mg^{2+} and Ca^{2+}), pH 7.4, 150mM NaCl, 0.02% sodium azide and 50% glycerol.**Immunogen:** The antiserum was produced against synthesized peptide derived from Internal of human Bloom Syndrome.**Purification:** The antibody was affinity-purified from rabbit antiserum by affinity-chromatography using epitope-specific immunogen.**Specificity:** Bloom Syndrome antibody detects endogenous levels of total Bloom Syndrome protein.**Reactivity:** Human (Identities = 100%, Positives = 100%)**Applications:** IHC: 1:50~1:100 IF: 1:100~1:500 ELISA: 1:1000**References:**

V. Ashutosh Rao. AACR Meeting Abstracts, Mar 2004; 2004: 1244.

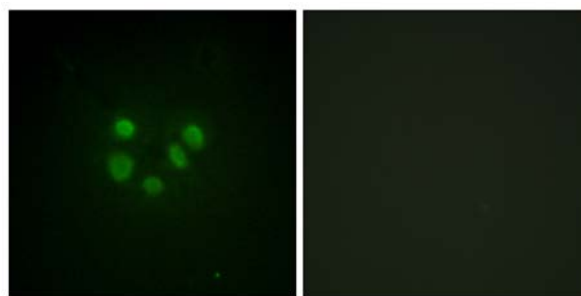
Xiaobing Du. Mol. Cell. Biol., Oct 2004; 24: 8437 - 8446.

Patricia L. Opresko. J. Biol. Chem., Oct 2002; 277: 41110 - 41119.



Peptide - +

Immunohistochemistry analysis of paraffin-embedded human lymph node tissue using Bloom Syndrome antibody.



Peptide - +

Immunofluorescence analysis of A549 cells, using Bloom Syndrome antibody.

For Research Use Only