



B-Raf (Phospho-Thr598) Antibody

E11-0780A

Catalog Number: E11-0780A**Concentration:** 1mg/ml**Swiss-Prot No.:** P15056

Other Names: B-RAF, B-RAF proto-oncogene serine/threonine-protein kinase, B-Raf proto-oncogene serine/threonine-protein kinase, BRAF, BRAF1, EC 2.7.1.37, EC 2.7.11.1, RAFB1, RMIL, RMIL serine/threonine-protein kinase, c-RMIL, kinase B-Raf, p94, v-Raf murine sarcoma viral oncogene homolog B1

All Sites: Human: Thr598; Mouse: Thr626; Rat: Thr636

Storage/Stability: Store at -20 °C/1 year

Form of Antibody: Rabbit IgG in phosphate buffered saline (without Mg^{2+} and Ca^{2+}), pH 7.4, 150mM NaCl, 0.02% sodium azide and 50% glycerol.

Immunogen: The antiserum was produced against synthesized phosphopeptide derived from human B-Raf around the phosphorylation site of threonine 598 (L-A-T^P-V-K).

Purification: The antibody was affinity-purified from rabbit antiserum by affinity-chromatography using epitope-specific phosphopeptide. The antibody against non-phosphopeptide was removed by chromatography using non-phosphopeptide corresponding to the phosphorylation site.

Specificity: B-Raf (Phospho-Thr598) antibody detects endogenous levels of B-Raf only when phosphorylated at threonine 598.

Reactivity: Human, Mouse, Rat

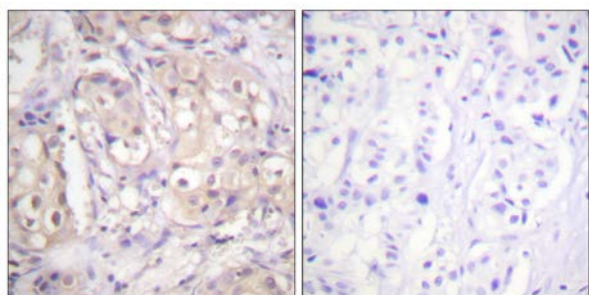
Applications: IHC: 1:50~1:100 ELISA: 1:40000

References:

Armelle Calipel, J. Biol. Chem., Oct 2003; 278: 42409 - 42418.

Tara J. Dillon, J. Biol. Chem., Sep 2003; 278: 35940 - 35949.

R K Jaiswal, Mol. Cell. Biol., Oct 1994; 14: 6944 - 6953.
Laura L. Dugan, J. Biol. Chem., Sep 1999; 274: 25842.



P-peptide

-

+

Immunohistochemistry analysis of paraffin-embedded human breast carcinoma tissue using B-Raf (Phospho-Thr598) antibody.

For Research Use Only