



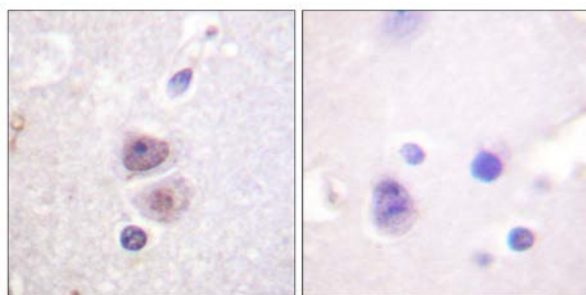
p38 MAPK (Ab-322) Antibody

E11-0798B**Catalog Number:** E11-0798B**Concentration:** 1mg/ml**Swiss-Prot No.:** Q16539**Other Names:** CRK1, CSAID binding protein, CSBP, CSBP1, CSBP2, Cytokine suppressive anti- inflammatory drug binding protein, EC 2.7.11.24, MAP kinase MXI2, MAP kinase p38, MAPK14, MAX-interacting protein 2, MK14, MXI2, Mitogen-activated protein kinase 14, Mitogen-activated protein kinase p38, kinase p38-alpha**Storage/Stability:** Store at -20°C/1 year**Form of Antibody:** Rabbit IgG in phosphate buffered saline (without Mg^{2+} and Ca^{2+}), pH 7.4, 150mM NaCl, 0.02% sodium azide and 50% glycerol.**Immunogen:** The antiserum was produced against synthesized non-phosphopeptide derived from human p38 MAPK around the phosphorylation site of tyreonine 322 (D-P-Y-D-Q).**Purification:** The antibody was affinity-purified from rabbit antiserum by affinity-chromatography using epitope-specific immunogen.**Specificity:** p38 MAPK (Ab-322) antibody detects endogenous levels of total p38 MAPK protein.**Reactivity:** Human, Mouse, Rat**Applications:** WB: 1:500~1:1000 IHC: 1:50~1:100 IF: 1:100~1:500 ELISA: 1:1000**References:**

Nasreen Khalil, J. Biol. Chem., Dec 2005; 280: 43000 - 43009.

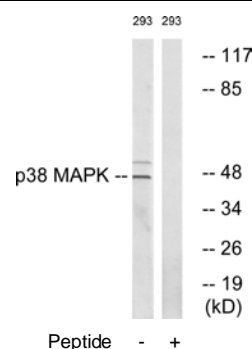
Monica Ambrose, AACR Meeting Abstracts, Apr 2005; 2005: 241.

Hiroe Shiratsuchi, Am J Physiol Renal Physiol, Oct 2002; 283: 678.



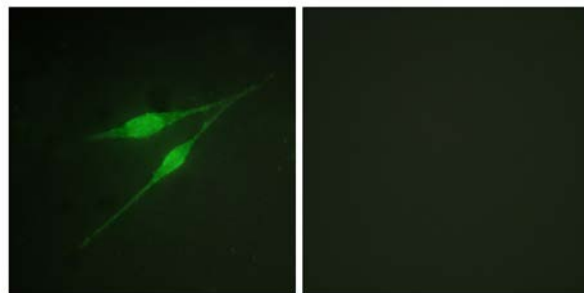
Peptide - +

Immunohistochemistry analysis of paraffin-embedded human brain tissue using p38 MAPK (Ab-322) antibody.



Western blot analysis of extracts from 293 cells, using p38 MAPK (Ab-322) antibody.

For Research Use Only



Peptide

-

+

Immunofluorescence analysis of NIH/3T3 cells, using p38
MAPK (Ab-322) antibody.