



p38 MAPK Antibody

E11-0799B

Catalog Number: E11-0799B

Concentration: 1mg/ml

Swiss-Prot No.: Q16539

Other Names: CRK1, CSAID binding protein, CSBP, CSBP1, CSBP2, Cytokine suppressive anti-inflammatory drug binding protein, EC 2.7.11.24, MAP kinase MXI2, MAP kinase p38, MAPK14, MAX-interacting protein 2, MK14, MXI2, Mitogen-activated protein kinase 14, Mitogen-activated protein kinase p38, kinase p38-alpha

Storage/Stability: Store at -20°C/1 year

Form of Antibody: Rabbit IgG in phosphate buffered saline (without Mg^{2+} and Ca^{2+}), pH 7.4, 150mM NaCl, 0.02% sodium azide and 50% glycerol.

Immunogen: The antiserum was produced against synthesized peptide derived from Internal of human p38 MAPK.

Purification: The antibody was affinity-purified from

rabbit antiserum by affinity-chromatography using epitope-specific immunogen.

Specificity: p38 MAPK antibody detects endogenous levels of total p38 MAPK protein.

Reactivity: Human (Identities = 100%, Positives = 100%);
Mouse (Identities = 100%, Positives = 100%);
Rat (Identities = 100%, Positives = 100%)

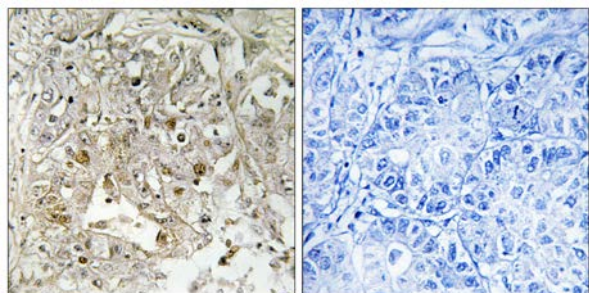
Applications: IHC: 1:50~1:100 ELISA: 1:1000

References:

Nasreen Khalil, J. Biol. Chem., Dec 2005; 280: 43000 - 43009.

Monica Ambrose, AACR Meeting Abstracts, Apr 2005; 2005: 241.

Hiroe Shiratsuchi, Am J Physiol Renal Physiol, Oct 2002; 283: 678.



Peptide

-

+

Immunohistochemistry analysis of paraffin-embedded human liver carcinoma tissue using p38 MAPK antibody.

For Research Use Only