



PKC ζ (Ab-560) Antibody

E11-0805B

Catalog Number: E11-0805B

Concentration: 1mg/ml

Swiss-Prot No.: Q05513

Other Names: EC 2.7.11.13, KPCZ, PKC-zeta, PKC2, PRKCZ, Protein kinase C zeta type, kinase PKC-zeta, nPKC-zeta

Storage/Stability: Store at -20°C/1 year

Form of Antibody: Rabbit IgG in phosphate buffered saline (without Mg^{2+} and Ca^{2+}), pH 7.4, 150mM NaCl, 0.02% sodium azide and 50% glycerol.

Immunogen: The antiserum was produced against synthesized non-phosphopeptide derived from human PKC ζ around the phosphorylation site of threonine 560 (Q-L-T^P-P-D).

Purification: The antibody was affinity-purified from rabbit antiserum by affinity-chromatography using

epitope-specific immunogen.

Specificity: PKC ζ (Ab-560) antibody detects endogenous levels of total PKC ζ protein.

Reactivity: Human, Mouse, Rat

Applications: WB: 1:500~1:1000 IHC: 1:50~1:100
IF: 1:100~1:500 ELISA: 1:1000

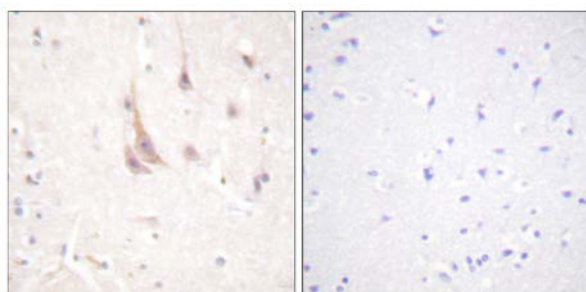
References:

Richard Magid, Circ. Res., Sep 2005; 97: 443 - 449.

M Fujihara, J. Immunol., Feb 1994; 152: 1898.

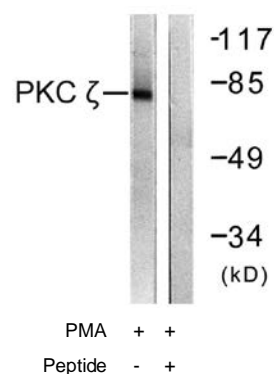
A. Banan, Am J Physiol Gastrointest Liver Physiol, May 2002; 282: 794.

A. Banan, Am J Physiol Gastrointest Liver Physiol, Oct 2002; 283: 909



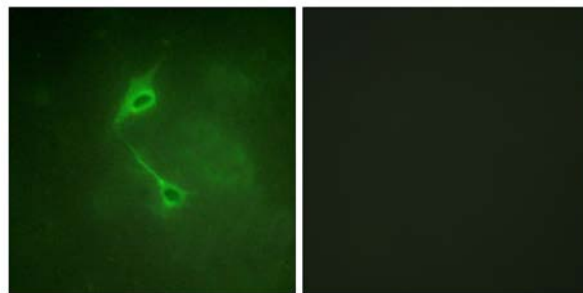
Peptide - +

Immunohistochemistry analysis of paraffin-embedded human brain tissue using PKC ζ (Ab-560) antibody.



Western blot analysis of extracts from COS7 cells, treated with PMA (125ng/ml, 30mins), using PKC ζ (Ab-560) antibody.

For Research Use Only



Peptide

-

+

Immunofluorescence analysis of NIH/3T3 cells, using
PKC ζ (Ab-560) antibody.