



BAD (Phospho-Ser91/128) Antibody

E11-0821A

Catalog Number: E11-0821A

Concentration: 1mg/ml

Swiss-Prot No.: Q92934

Other Names: BAD, BBC6, BCL2L8, Bcl- XL/Bcl-2 associated death promoter, Bcl-2 binding component 6, Bcl-2-like 8 protein, Bcl-xL/Bcl-2 associated death promoter, Bcl2-antagonist of cell death

All Sites: Human: Ser91; Mouse: Ser128; Rat: Ser129

Storage/Stability: Store at -20°C/1 year

Form of Antibody: Rabbit IgG in phosphate buffered saline (without Mg^{2+} and Ca^{2+}), pH 7.4, 150mM NaCl, 0.02% sodium azide and 50% glycerol.

Immunogen: The antiserum was produced against synthesized phosphopeptide derived from human BAD around the phosphorylation site of serine 91/ serine 128 (E-L-S^P-P-F).

Purification: The antibody was affinity-purified from

rabbit antiserum by affinity-chromatography using epitope-specific phosphopeptide. The antibody against non-phosphopeptide was removed by chromatography using non-phosphopeptide corresponding to the phosphorylation site.

Specificity: BAD (Phospho-Ser91/128) antibody detects endogenous levels of BAD only when phosphorylated at serine 91/ serine 128.

Reactivity: Human, Mouse, Rat

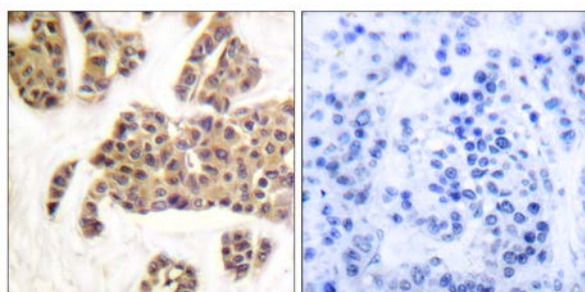
Applications: WB: 1:500~1:1000 IHC: 1:50~1:100
ELISA: 1:10000

References:

Wang H.-G., Cell 87:629-638(1996).

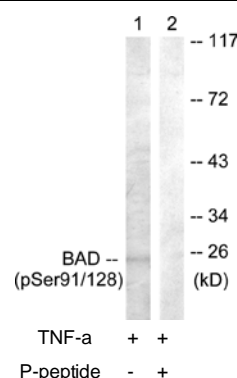
Ottile S., J. Biol. Chem. 272:30866-30872(1997).

The MGC Project Team, Genome Res. 14:2121-2127(2004).



P-peptide - +

Immunohistochemistry analysis of paraffin-embedded human breast carcinoma tissue using BAD (Phospho-Ser91/128) antibody.



Western blot analysis of extracts from COS7 cells, treated with TNF-a (20ng/ml, 30mins), using BAD (Phospho-Ser91/128) antibody.

For Research Use Only