



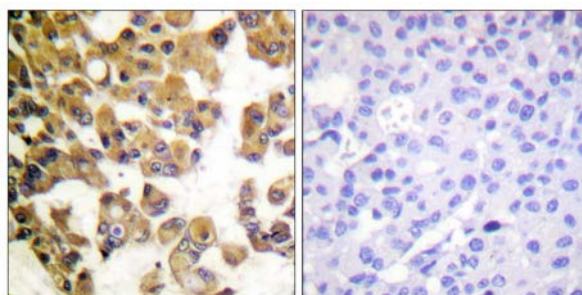
BAD Antibody

E11-0821B**Catalog Number:** E11-0821B**Concentration:** 1mg/ml**Swiss-Prot No.:** Q92934**Other Names:** BAD, BBC6, BCL2L8, Bcl- XL/Bcl-2 associated death promoter, Bcl-2 binding component 6, Bcl-2-like 8 protein, Bcl-xL/Bcl-2 associated death promoter, Bcl2-antagonist of cell death**Storage/Stability:** Store at -20°C/1 year**Form of Antibody:** Rabbit IgG in phosphate buffered saline (without Mg^{2+} and Ca^{2+}), pH 7.4, 150mM NaCl, 0.02% sodium azide and 50% glycerol.**Immunogen:** The antiserum was produced against synthesized peptide derived from Internal of human BAD.**Purification:** The antibody was affinity-purified from rabbit antiserum by affinity-chromatography using epitope-specific immunogen.**Specificity:** BAD antibody detects endogenous levels of total BAD protein.**Reactivity:** Human (Identities = 100%, Positives = 100%); Mouse (Identities = 100%, Positives = 100%);
Rat (Identities = 100%, Positives = 100%)**Applications:** IHC: 1:50~1:100 ELISA: 1:10000**References:**

Wang H.-G., Cell 87:629-638(1996).

Ottile S., J. Biol. Chem. 272:30866-30872(1997).

The MGC Project Team, Genome Res. 14:2121-2127(2004).



Peptide - +

Immunohistochemistry analysis of paraffin-embedded
human breast carcinoma tissue using BAD antibody.**For Research Use Only**