



BAD (Phospho-Ser134) Antibody

E11-0822A

Catalog Number: E11-0822A

Concentration: 1mg/ml

Swiss-Prot No.: Q92934

Other Names: BAD, BBC6, BCL2L8, Bcl- XL/Bcl-2 associated death promoter, Bcl-2 binding component 6, Bcl-2-like 8 protein, Bcl-xL/Bcl-2 associated death promoter, Bcl2-antagonist of cell death

All Sites: Human: Ser134; Mouse: Ser170; Rat: Ser171

Storage/Stability: Store at -20°C/1 year

Form of Antibody: Rabbit IgG in phosphate buffered saline (without Mg^{2+} and Ca^{2+}), pH 7.4, 150mM NaCl, 0.02% sodium azide and 50% glycerol.

Immunogen: The antiserum was produced against synthesized phosphopeptide derived from human BAD around the phosphorylation site of serine 134 (P-K-S^P-A-G).

Purification: The antibody was affinity-purified from rabbit antiserum by affinity-chromatography using epitope-specific phosphopeptide. The antibody against non-phosphopeptide was removed by chromatography using non-phosphopeptide corresponding to the phosphorylation site.

Specificity: BAD (Phospho-Ser134) antibody detects endogenous levels of BAD only when phosphorylated at serine 134.

Reactivity: Human, Mouse, Rat

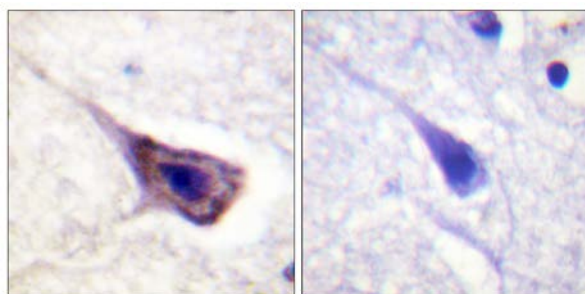
Applications: WB: 1:500~1:1000 IHC: 1:50~1:100
IF: 1:100~1:500 ELISA: 1:5000

References:

Ottile S., J. Biol. Chem. 272:30866-30872(1997).

Wang H.-G., Cell 87:629-638(1996).

Petros A.M., Protein Sci. 9:2528-2534(2000).

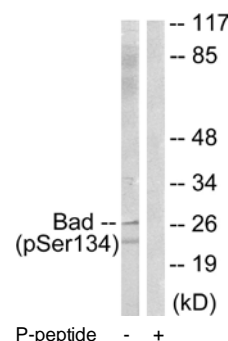


P-peptide

-

+

Immunohistochemistry analysis of paraffin-embedded human brain tissue using BAD (Phospho-Ser134) antibody.



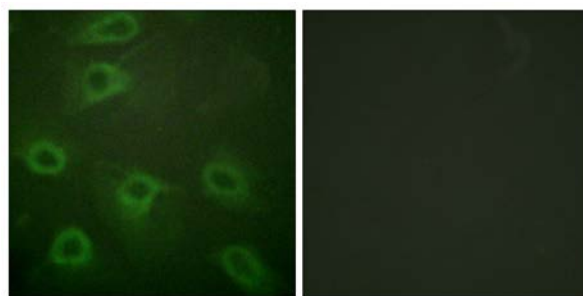
P-peptide

-

+

Western blot analysis of extracts from mouse liver cells, using BAD (Phospho-Ser134) antibody.

For Research Use Only



P-peptide

-

+

Immunofluorescence analysis of HeLa cells, using BAD
(Phospho-Ser134) antibody.